



**2021**

*Taking Innovation to New Depths*

**highblue**<sup>®</sup>  
THE BRIGHTER IDEA

# C o n t e n t s

AL250	P.78	Camera Arms	P.98	Gloves, Hoods & Handles	P.93
AL250 Camouflage	P.71	Camera Clips & Accessories	P.98	HL450N	P.83
AL450WM Tail	P.76	Camera Trays	P.89	HL450XW	P.83
AL450WM Tail Camouflage	P.70	Camera Filters	P.85	HL1000N	P.82
AL450NM Tail	P.77	CB6500P	P.40	HL1000XW	P.82
AL450NM Tail Camouflage	P.69	CB6500PB	P.12	Light Filters	P.94
AL1200RAFO	P.75	CB10000P	P.38	Light Head	P.61
AL1300NP	P.72	CB10000PBRC	P.10	Outdoor Dry Bags	P.96
AL1200NP II Camouflage	P.68	CB15000P	P.36	Optical Fibre	P.93
AL1200NP IR	P.17	CB15000PBRC	P.6	Protective Case Series	P.84
AL1300WP	P.73	CB30000P II	P.34	RGB White II	P.79
AL1200WP IR	P.17	CB60000P	P.32	Red Spot Light & Green Spot Light	P.84
AL1300XWP	P.74	CF450M	P.81	Snoots	P.94
AL1300NP Tail	P.66	CF1200P II	P.80	Spring Cord	P.95
AL1300WP Tail	P.67	Chargers	P.92	TL2600P	P.60
AL1300 Strobe	P.65	Combo Packs	P.86	TL3500P	P.59
AL2600XWPB	P.16	Controller	P.93	TL3500P Supreme	P.58
AL1800NP	P.64	Easy Clip Lights	P.98	TL4800P	P.58
AL1800P Tri Color II	P.63	Easy Release Mount Series	P.96	TL4800P Backmount / Sidemount	P.54
AL2600XWP II	P.62	Float Arms, Flexi Arms	P.97	TL8000P	P.52
Ambient Filters	P.93	Fluorodive Kits	P.85		
Batteries	P.91			VL4200P	P.30
				VL4200PB	P.14
				VL8000P Tri Color	P.28
				VL10000P	P.26
				VL10000PBRC	P.8
				VL18000P Pro Mini	P.24
				VL18000PBRC	P.4
				VL18000P Pro Mini Tri Color	P.22
				VL33000P II	P.20
				VL33000PRC	P.2
				VL65000P	P.18
				VTL2600P	P.51
				VTL3800P	P.50
				VTL8000P	P.48
				VTL8000P Max	P.44
				VTL8000P Backmount / Sidemount	P.46
				VTL10000P	P.42



# VL33000 PRC

Li ion Rechargeable Battery Ultra Power  
LED Video Light with Remote Control Option



**33000  
LUMENS**  
Angle of light beam  
**160° wide beam**



## SPECIFICATIONS

Light source	45 x XML LED + 10 x XPE Red LED
Light output	3300 Lm (level I), 8250 Lm (level II) 16500 Lm (level III), 33000 Lm (level IV)
Light output (Red color mode)	1200 Lm
Casing material	Aluminum alloy, Anti-corrosive anodized
Power source	Li ion Rechargeable battery pack BATCELL21700x8
Angle of light beam	160° wide beam
Color temperature	6500K
Burn time	1.5 hrs (level IV), 3 hrs (level III) 6 hrs (level II) and 15 hrs (level I)
Maximum depth	100 m tested
Size	Dia. 85 x L 144.6mm
Weight in air	1391 g (including battery)
Buoyancy in seawater	-597 g (including battery)
Switching system	Push button with battery indicator
Front glass	Tempered optical glass

## SPECIFICATIONS for CONTROLLER

Casing material	Aluminum alloy, Anti-corrosive anodized
Power source	CR2032x2
Maximum depth	100 m tested
Size	Dia. 30 x L 98.3mm
Weight in air	110 g (including battery)
Buoyancy in seawater	-51 g (including battery)
Switching system	Push button with battery indicator

- 4 levels of brightness 1 level of brightness of Red color mode and SOS controlled by a reliable push button design
- Battery level indicator built-in: Blue color /Green color / Red color / Flash Red color
- Easy to change up the battery pack BATCELL21700x8
- Built-in red color led enhances focusing performance
- 45pcs XML LED to provide 33000 lumens
- Comes with ball joint for easy system setup
- Place to insert the optical fibre
- Comes with protective case for VL33000PRC
- Ergonomic aluminum handle comes in a package
- Optical fibre. Sold separately.
- Controller kit set. Sold separately.
- Set-up for the Controller.





# VL18000 PBR

Li ion Rechargeable Battery Super Power  
LED Video Light with Blue Light  
with Remote Control Option



**18000  
LUMENS**  
Angle of light beam  
**160° wide beam**



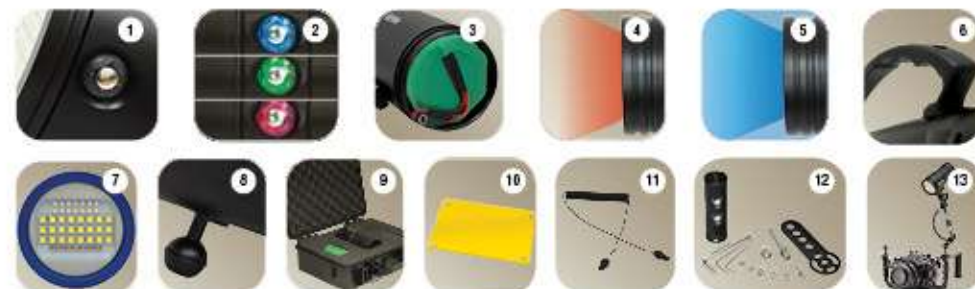
## SPECIFICATIONS

Light source	24 x XML LED + 8 x XPE Red LED + 14 x XPE Blue LED
Light output	4500 Lm (level I), 9000 Lm (level II), 18000 Lm (level III)
Light output (Red color mode)	1000 Lm
Light output (Blue color mode)	113 Lm (level I), 225 Lm (level II), 450 Lm (level III)
Casing material	Aluminum alloy. Anti-corrosive anodized
Power source	Li ion Rechargeable battery pack BATCELL18650x7
Angle of light beam	160° wide beam
Color temperature	6500K
Burn time	2 hrs (level III), 4 hrs (level II) and 8 hrs (level I)
Maximum depth	100 m tested
Size	Dia. 70 x L. 142.5mm
Weight in air	774 g (including battery)
Buoyancy in seawater	-291 g (including battery)
Switching system	Push button with battery indicator
Front glass	Tempered optical glass
Lanyard	Included
Yellow plate	Included

## SPECIFICATIONS for CONTROLLER

Casing material	Aluminum alloy. Anti-corrosive anodized
Power source	CR2032x2
Maximum depth	100 m tested
Size	Dia. 30 x L. 98.3mm
Weight in air	110 g (including battery)
Buoyancy in seawater	-51 g (including battery)
Switching system	Push button with battery indicator

- 3 levels of brightness for cool white mode, 3 levels of brightness for blue color light, 1 level of brightness for red color mode and SOS controlled by a reliable push button design
- Battery level indicator built-in: Blue color / Green color / Red color / Flash Red color
- BATCELL18650x7 Li ion Rechargeable Battery
- Built-in red color led enhances focusing performance
- Built-in blue color led for fluorodiving performance. Go with yellow plate for better result.
- Ergonomic aluminum handle comes in a package
- 24pcs XML LED to provide 18000 lumens
- Comes with ball joint for easy system setup
- Comes with protective case for VL 18000PBR
- Comes with yellow plate.
- Optical fibre. Sold separately.
- Controller kit set. Sold separately.
- Set-up for the Controller.





# CB15000 PBRC

Li ion Rechargeable Battery Super Power  
LED Video Light with High Color Rendering  
Index with Blue Light with Remote  
Control Option



**15000  
LUMENS**  
Angle of light beam  
**160° wide beam**



## SPECIFICATIONS

Light source	COB LED + 8 x XPE Red LED + 8 XPE Blue LED
Light output	3750 Lm (level I) 7500 Lm (level II), 15000 Lm (level III)
Light output (Red color mode)	1000 Lm
Light output (Blue color mode)	55 Lm (level I) 110 Lm (level II), 220 Lm (level III)
Casing material	Aluminum alloy, Anti-corrosive anodized
Power source	Li ion Rechargeable battery pack BATCELL18650x7
Angle of light beam	160° wide beam
Color temperature	5000K
Color Rendering Index	Ra85
Burn time	1.5 hrs (level III), 3 hrs (level II) and 6 hrs (level I)
Maximum depth	100 m tested
Size	Dia. 70 x L. 142.5mm
Weight in air	787 g (including battery)
Buoyancy in seawater	-304 g (including battery)
Switching system	Push button with battery indicator
Front glass	Tempered optical glass
Lanyard	Included
Yellow plate	Included

## SPECIFICATIONS for CONTROLLER

Casing material	Aluminum alloy, Anti-corrosive anodized
Power source	CR2032x2
Maximum depth	100 m tested
Size	Dia. 30 x L. 98.3mm
Weight in air	110 g (including battery)
Buoyancy in seawater	-51 g (including battery)
Switching system	Push button with battery indicator

- 3 levels of brightness for cool white mode, 3 levels of brightness for blue color light, 1 level of brightness for red color mode and SOS controlled by a reliable push button design
- Battery level indicator built-in: Blue color / Green color / Red color / Flash Red color
- BATCELL18650x7 Li ion Rechargeable Battery
- Built-in red color led enhances focusing performance
- Built-in blue color led for fluorodiving performance. Go with yellow plate for better result.
- COB LED to provide 15000 lumens
- Place to insert the optical fibre.
- Comes with ball joint for easy system setup
- Ergonomic aluminum handle comes in a package
- Comes with protective case for CB 15000PBRC.
- Comes with yellow plate.
- Optical fibre. Sold separately.
- Controller kit set. Sold separately.
- Set-up for the Controller.





# VL10000 PBRG

Li ion Rechargeable Battery High Power  
LED Video Light with Blue Light  
with Remote Control Option



## SPECIFICATIONS

Light source	15 x XML LED + 6 x XPE Red LED + 8 XPE Blue LED
Light output	2500 Lm (level I) 5000 Lm (level II), 10000 Lm (level III) 500 Lm
Light output (Red color mode)	
Light output (Blue color mode)	55 Lm (level I) 110 Lm (level II), 220 Lm (level III)
Casing material	Aluminum alloy Anti-corrosive anodized
Power source	Li ion Rechargeable battery pack BATCELL18650x4
Angle of light beam	120° wide beam
Color temperature	6500K
Burn time	2.5 hrs (level III), 5 hrs (level II) and 10 hrs (level I)
Maximum depth	100 m tested
Size	Dia. 55.4 x L. 130.6mm
Weight in air	467 g (including battery)
Buoyancy in seawater	-184 g (including battery)
Switching system	Push button with battery indicator
Front glass	Tempered optical glass
Lanyard	Included
Yellow plate	Included

## SPECIFICATIONS for CONTROLLER

Casing material	Aluminum alloy, Anti-corrosive anodized
Power source	CR2032x2
Maximum depth	100 m tested
Size	Dia. 30 x L. 98.3mm
Weight in air	110 g (including battery)
Buoyancy in seawater	-51 g (including battery)
Switching system	Push button with battery indicator

- 3 levels of brightness for cool white mode, 3 levels of brightness for blue color light, 1 level of brightness for red color mode and SOS controlled by a reliable push button design
- Battery level indicator built-in: Blue color / Green color / Red color / Flash Red color
- BATCELL18650x4 Li ion Rechargeable Battery
- Built-in red color led enhances focusing performance
- Built-in blue color led for fluorodiving performance. Go with yellow plate for better result.
- Comes with ball joint for easy system setup
- Removable yellow filter enhances warmer color tone
- Sturdy glove for hands-free operation underwater
- Comes with yellow plate.
- Comes with random color outdoor dry bag
- Optical fibre. Sold separately.
- Controller kit set. Sold separately.
- Set-up for the Controller.





# CB10000 PBRC

Li ion Rechargeable Battery High Power LED  
Video Light with High Color Rendering Index  
with Blue Light with Remote Control Option



## SPECIFICATIONS

Light source	COB LED + 6 x XPE Red LED + 8 x XPE Blue LED
Light output	2500 Lm (level I) 5000 Lm (level II), 10000 Lm (level III)
Light output (Red color mode)	500 Lm
Light output (Blue color mode)	55 Lm (level I), 110 Lm (level II), 220 Lm (level III)
Casing material	Aluminum alloy, Anti-corrosive anodized
Power source	Li ion Rechargeable battery pack BATCELL21700x4
Angle of light beam	120° wide beam
Color temperature	5000K
Color Rendering Index	Ra85
Burn time	1.5 hrs (level III), 3 hrs (level II) and 6 hrs (level I)
Maximum depth	100 m tested
Size	Dia. 63 x L 140.6mm
Weight in air	679 g (including battery)
Buoyancy in seawater	-283g (including battery)
Switching system	Push button with battery indicator
Front glass	Tempered optical glass
Lanyard	Included
Yellow plate	Included

## SPECIFICATIONS for CONTROLLER

Casing material	Aluminum alloy, Anti-corrosive anodized
Power source	CR2032x2
Maximum depth	100 m tested
Size	Dia. 30 x L 98.3mm
Weight in air	110 g (including battery)
Buoyancy in seawater	-51 g (including battery)
Switching system	Push button with battery indicator

- 3 levels of brightness for cool white mode, 3 levels of brightness for blue color light, 1 level of brightness for red color mode and SOS controlled by a reliable push button design
- Battery level indicator built-in: Blue color / Green color / Red color / Flash Red color
- BATCELL21700x4 Li ion Rechargeable Battery
- Built-in red color led enhances focusing performance
- Built-in blue color led for fluorodiving performance. Go with yellow plate for better result.
- Comes with ball joint for easy system setup
- Place to insert the optical fibre.
- Snoot connector for CB 10000PBRC. Sold separately.
- Sturdy glove for hands-free operation underwater
- Comes with yellow plate.
- Comes with random color outdoor dry bag
- Optical fibre. Sold separately.
- Controller kit set. Sold separately.
- Set-up for the Controller.





# CB6500PB

Li ion Rechargeable Battery High Power LED  
Video Light with High Color Rendering Index  
with Blue Light



## SPECIFICATIONS

Light source	COB LED + 6 x XPE Red LED + 8 x XPE Blue LED
Light output	1625 Lm (level I), 3250 Lm (level II), 6500 Lm (level III)
Light output (Red color mode)	500 Lm
Light output (Blue color mode)	55 Lm (level I), 110 Lm (level II), 220 Lm (level III)
Casing material	Aluminum alloy. Anti-corrosive anodized
Power source	Li ion Rechargeable battery pack BATCELL 21700x4
Angle of light beam	120° wide beam
Color temperature	5000K
Color Rendering Index	Ra 85
Burn time	2 hrs (level III), 4 hrs (level II) and 8 hrs (level I)
Maximum depth	100 m tested
Size	Dia. 63 x L. 134.6mm
VWeight in air	653g (including battery)
Buoyancy in seawater	-272g (including battery)
Switching system	Push button with battery indicator
Front glass	Tempered optical glass
Lanyard	Included
Yellow plate	Included

1. 3 levels of brightness for cool white mode, 3 levels of brightness for blue color light, 1 level of brightness for red color mode and SOS controlled by a reliable push button design
2. Battery level indicator built-in: Blue color /Green color / Red color / Flash Red color
3. BATCELL21700x4 Li ion Rechargeable Battery
4. Built-in red color led enhances focusing performance
5. Built-in blue color led for fluorodiving performance. Go with yellow plate for better result.
6. Snoot connector for CB 6500PB. Sold separately.
7. Sturdy glove for hands-free operation underwater
8. Comes with ball joint for easy system setup
9. Comes with random color outdoor dry bag
10. Comes with yellow plate.





# VL4200PB

Li ion Rechargeable Battery LED  
Video Light with Blue Light



## SPECIFICATIONS

Light source	6 x XML LED + 4 x XPE Red LED + 4 x XPE Blue LED
Light output	1050 Lm (level I), 2100 Lm (level II) 4200 Lm (level III)
Light output (Red color mode)	200 Lm
Light output (Blue color mode)	30 Lm (level I), 60 Lm (level II) 120 Lm (level III)
Casing material	Aluminum alloy. Anti-corrosive anodized
Power source	Li ion Rechargeable battery pack 32650
Angle of light beam	120° wide beam
Color temperature	6500K
Burn time	1.5 hrs (level III), 3 hrs (level II) and 6 hrs (level I)
Maximum depth	100 m tested
Size	Dia. 44 x L 121.1 mm
Weight in air	318 g (including battery)
Buoyancy in seawater	-167 g (including battery)
Switching system	Push button with battery indicator
Front glass	Tempered optical glass
Lanyard	Included
Yellow plate	Included

- 3 levels of brightness for cool white mode, 3 levels of brightness for blue color light, 1 level of brightness for red color mode and SOS controlled by a reliable push button design
- Battery level indicator built-in: Blue color / Green color / Red color / Flash Red color
- BATCELL36250 Li ion Rechargeable Battery
- Built-in red color led enhances focusing performance
- Built-in blue color led for fluorodiving performance. Go with yellow plate for better result.
- Sturdy glove for hands-free operation underwater
- Comes with ball joint for easy system setup
- Removable yellow filter enhances warmer color tone
- Comes with random color outdoor dry bag
- Comes with yellow plate.





AL2600<sub>XWPB</sub>

Black Molly VB



## SPECIFICATIONS

Light source	4 x XML LED + 2 x XPE Red LED + 2 x XPE Blue LED
Light output	650 Lm (level I), 1300 Lm (level II), 2600 Lm (level III)
Light output (Red color mode)	150 Lm
Light output (Blue color mode)	15 Lm (level I), 30 Lm (level II), 60 Lm (level III)
Casing material	Aluminum alloy. Anti-corrosive anodized
Power source	Li ion Rechargeable battery pack BATCELL 26650
Angle of light beam	120° wide beam
Color temperature	6500K
Burn time	2 hrs (level III), 4 hrs (level II) and 8 hrs (level I)
Maximum depth	100 m tested
Size	Dia. 35.5 x L 126.8mm
Weight in air	218g (including battery)
Buoyancy in seawater	-105g (including battery)
Switching system	Push button with battery indicator
Front glass	Tempered optical glass
Lanyard	Included
Yellow plate	Included

- 3 levels of brightness for cool white mode, 3 levels of brightness for blue color light, 1 level of brightness for red color mode and SOS controlled by a reliable push button design
- Battery level indicator built-in: Blue color / Green color / Red color / Flash Red color
- Built-in red color led enhances focusing performance
- Built-in blue color led for fluorodiving performance. Go with yellow plate for better result
- Removable yellow filter enhances warmer color tone
- Comes with yellow plate.
- BATCELL26650 Li ion Rechargeable Battery
- Comes with ball joint for easy system setup
- Protective case for AL 2600XWPB. Sold separately.
- Protective case for AL 2600XWPB and Single Arm Tray. Sold separately.
- Comes with random color outdoor dry bag

AL1200<sub>NPIR</sub>

940nm IR



## SPECIFICATIONS

Light source	IR (940nm)
Casing material	Aluminum alloy. Anti-corrosive anodized
Power source	Li ion Rechargeable battery pack 18650
Angle of light beam	10° narrow beam
Burn time	2 hrs (level IV), 5 hrs (level III), 10 hrs (level II) and 20 hrs (level I)
Maximum depth	100 m tested
Size	Dia. 33.2 x L 139.8 mm
Weight in air	168 g (including battery)
Buoyancy in seawater	-76 g (including battery)
Switching system	Push button with battery indicator
Front glass	Tempered optical glass
Lanyard	Included



4 levels of brightness, and SOS controlled by a reliable push button design



BATCELL 18650 Li ion Rechargeable Battery



Battery level indicator built-in: Blue color / Green color / Red color / Flash Red color

AL1200<sub>WPIR</sub>

Comes with random color outdoor dry bag



## SPECIFICATIONS

Light source	IR (940nm)
Casing material	Aluminum alloy. Anti-corrosive anodized
Power source	Li ion Rechargeable battery pack 18650
Angle of light beam	85° wide beam
Burn time	2 hrs (level IV), 5 hrs (level III), 10 hrs (level II) and 20 hrs (level I)
Maximum depth	100 m tested
Size	Dia. 35.5 x L 126.3 mm
Weight in air	162 g (including battery)
Buoyancy in seawater	-84 g (including battery)
Switching system	Push button with battery indicator
Front glass	Concave lens
Lanyard	Included



# VL65000P

Li ion Rechargeable Battery  
Huge Power LED Video Light



## SPECIFICATIONS

Light source	72 x XML LED + 20 x XPE Red LED
Light output	6500 Lm (level I), 16250 Lm (level II) 32500 Lm (level III), 65000 Lm (level IV)
Light output (Red color mode)	2000 Lm
Casing material	Aluminum alloy. Anti-corrosive anodized
Power source	Li ion Rechargeable battery pack 2xBATCELL60000
Angle of light beam	160° wide beam
Color temperature	6500K
Burn time	1.5 hrs (level IV), 3 hrs (level III) 6 hrs (level II) and 15 hrs (level I)
Maximum depth	100 m tested
Size	Dia. 120 x L. 240 mm
Weight in air	3766g (including battery)
Buoyancy in seawater	-1107g (including battery)
Switching system	Push button with battery indicator
Front glass	Tempered optical glass

**The Most  
Brightness  
65000  
LUMENS**  
Angle of light beam  
**160°**

1. 4 levels of brightness, 1 level of brightness of Red color mode and SOS controlled by a reliable push button design. Press two keys at the same time to come up 100%, 50%, 25%, 10% four power level setting.
2. Battery level indicator built-in: Blue color / Green color / Red color / Flash Red color
3. 2xBATCELL60000 Li ion Rechargeable Battery
4. Built-in red color led enhances focusing performance
5. Easy to charge up the battery pack BATCELL60000
6. 72pcs XML LED to provide 65000 lumens
7. Comes with ball joint for easy system setup
8. Make use of double clip and single arm to make the handle. Comes in a package.
9. Comes with protective case for VL65000P.





# VL33000 PII

Li ion Rechargeable Battery  
Ultra Power LED Video Light



## SPECIFICATIONS

Light source	45 x XML LED + 10 x XPE Red LED
Light output	3300 Lm (level I), 8250 Lm (level II) 16500 Lm (level III), 33000 Lm (level IV)
Light output ( Red color mode)	1200 Lm
Casing material	Aluminum alloy. Anti-corrosive anodized
Power source	Li ion Rechargeable battery pack BATCELL 21700x8
Angle of light beam	160° wide beam
Color temperature	6500K
Burn time	1.5 hrs (level IV), 3 hrs (level III) 6 hrs (level II) and 15 hrs (level I)
Maximum depth	100 m tested
Size	Dia. 85 x L 144.6mm
Weight in air	1391g (including battery)
Buoyancy in seawater	-597g (including battery)
Switching system	Push button with battery indicator
Front glass	Tempered optical glass

**33000  
LUMENS**  
Angle of light beam  
**160°**

1. 4 levels of brightness 1 level of brightness of Red color mode and SOS controlled by a reliable push button design
2. Battery level indicator built-in: Blue color /Green color / Red color / Flash Red color
3. Easy to charge up the battery pack BATCELL 21700x8
4. Built-in red color led enhances focusing performance

5. 45pcs XML LED to provide 33000 lumens
6. Comes with ball joint for easy system setup
7. Ergonomic aluminum handle comes in a package
8. Comes with protective case for VL33000P II.





# VL18000P

PRO MINI  
TRI COLOR

Li ion Rechargeable Battery Super Power  
LED Video Light with Three Color Output



## SPECIFICATIONS

Light source	32 x XML LED + 8 x XPE Red LED
Light output (Cool white mode)	4500 Lm (level I), 9000 Lm (level II) 18000 Lm (level III)
Light output (Warm white mode)	2000 Lm (level I), 4000 Lm (level II) 8000 Lm (level III)
Light output (Red color mode)	1000 Lm
Casing material	Aluminum alloy. Anti-corrosive anodized
Power source	Li ion Rechargeable battery pack BATCELL18650x7
Angle of light beam	160° wide beam
Color temperature	6500K cool white and 5500K warm white
Burn time	2 hrs (level III), 4 hrs (level II) and 8 hrs (level I)
Maximum depth	100 m tested
Size	Dia. 70 x L. 136mm
Weight in air	772 g (including battery)
Buoyancy in seawater	-313 g (including battery)
Switching system	Push button with battery indicator
Front glass	Tempered optical glass
Lanyard	Included

**18000  
LUMENS**  
Angle of light beam  
**160° wide beam**

- 3 Levels of brightness for cool white mode, 3 Levels of brightness for warm white mode, 1 level of brightness of Red color mode, and SOS controlled by a reliable push button design
- Battery level indicator built-in: Blue color / Green color / Red color / Flash Red color
- BATCELL18650x7 Li ion Rechargeable Battery
- Built-in red color led enhances performance
- Built-in yellow color led enhances warmer color tone
- Ergonomic aluminum handle comes in a package
- FILFLUORO15000 Fluorodrive filter for VL 18000P Pro Mini Tri Color. Sold separately.
- Comes with ball joint for easy system setup
- Comes with protective case for VL 18000P Pro Mini Tri Color.





# VL18000P<sub>P</sub> | PRO MINI

Li ion Rechargeable Battery  
Super Power LED Video Light



## SPECIFICATIONS

Light source	24 x XML LED + 8 x XPE Red LED
Light output	1800 Lm (level I), 4500 Lm (level II) 9000 Lm (level III), 18000 Lm (level IV)
Light output (Red color mode)	1000 Lm
Casing material	Aluminum alloy. Anti-corrosive anodized
Power source	Li ion Rechargeable battery pack BATCELL18650x7
Angle of light beam	160° wide beam
Color temperature	6500K
Burn time	2 hrs (level IV), 4 hrs (level III) 8hrs (level II) and 20 hrs (level I)
Maximum depth	100 m tested
Size	Dia. 70 x L 136mm
Weight in air	757 g (including battery)
Buoyancy in seawater	-298 g (including battery)
Switching system	Push button with battery indicator
Front glass	Tempered optical glass
Lanyard	Included

**18000  
LUMENS**  
Angle of light beam  
**160° wide beam**

1. 4 levels of brightness, 1 level of brightness of Red color mode and SOS controlled by a reliable push button design
2. Battery level indicator built-in: Blue color /Green color / Red color / Flash Red color
3. BATCELL18650x7 Li ion Rechargeable Battery
4. Built-in red color led enhances focusing performance
5. 24pcs XML LED to provide 18000 lumens

6. Ergonomic aluminum handle comes in a package
7. FILFLUORO15000 Fluorodrive filter for VL 18000P Pro Mini. Sold separately.
8. Comes with ball joint for easy system setup
9. Comes with protective case for VL 18000P Pro Mini.





# VL10000P

Li ion Rechargeable Battery High Power  
LED Video Light



## SPECIFICATIONS

Light source	15 x XML LED + 6 x XPE Red LED
Light output	1000 Lm (level I), 2500 Lm (level II) 5000 Lm (level III), 10000 Lm (level IV)
Light output (Red color mode)	500 Lm
Casing material	Aluminum alloy. Anti-corrosive anodized
Power source	Li ion Rechargeable battery pack BATCELL18650x4
Angle of light beam	120° wide beam
Color temperature	6500K
Burn time	2.5 hrs (level IV), 5 hrs (level III) 10 hrs (level II) and 25 hrs (level I)
Maximum depth	100 m tested
Size	Dia. 55.4 x L 130.6mm
Weight in air	457g (including battery)
Buoyancy in seawater	-173g (including battery)
Switching system	Push button with battery indicator
Front glass	Tempered optical glass
Lanyard	Included

1. 4 Levels of brightness, 1 level of brightness of Red color mode and SOS controlled by a reliable push button design
2. Battery level indicator built-in: Blue color / Green color / Red color / Flash Red color
3. BATCELL18650x4 Li ion Rechargeable Battery
4. Built-in red color led enhances focusing performance

5. Removable yellow filter enhances warmer color tone
6. Sturdy glove for hands-free operation underwater
7. Comes with ball joint for easy system setup
8. Comes with random color outdoor dry bag





# VL8000P TRI COLOR

Li ion Rechargeable Battery High Power LED Video Light with Three Color Output



## SPECIFICATIONS

Light source	15 x XML LED + 6 x XPE Red LED
Light output (Cool white mode)	2000 Lm (level I), 4000 Lm (level II) 8000 Lm (level III)
Light output (Warm white mode)	1000 Lm (level I), 2000 Lm (level II) 4000 Lm (level III)
Light output (Red color mode)	500 Lm
Casing material	Aluminum alloy. Anti-corrosive anodized
Power source	Li ion Rechargeable battery pack BATCELL18650x4
Angle of light beam	120° wide beam
Color temperature	6500K cool white and 5500K warm white
Burn time	3 hrs (level III), 6 hrs (level II) and 12 hrs (level I)
Maximum depth	100 m tested
Size	Dia. 55.4 x L. 130.6mm
Weight in air	457 g (including battery)
Buoyancy in seawater	-173 g (including battery)
Switching system	Push button with battery indicator
Front glass	Tempered optical glass
Lanyard	Included

- 3 Levels of brightness for cool white mode, 3 Levels of brightness for warm white mode, 1 level of brightness of Red color mode and SOS controlled by a reliable push button design
- Battery level indicator built-in: Blue color / Green color / Red color / Flash Red color
- BATCELL18650x4 Li ion Rechargeable Battery

- Built-in red color led enhances focusing performance
- Built-in yellow color led enhances warmer color tone
- Sturdy glove for hands-free operation underwater
- Comes with ball joint for easy system setup
- Comes with random color outdoor dry bag





# VL4200P

Li ion Rechargeable Battery  
LED Video Light



Available in 3 colors



## SPECIFICATIONS

Light source	6 x XML LED + 4 x XPE Red LED
Light output ( Flood beam mode)	420 Lm (level I), 1050 Lm (level II) 2100 Lm (level III), 4200 Lm (level IV)
Light output ( Red color mode)	200 Lm
Casing material	Aluminum alloy. Anti-corrosive anodized
Power source	Li ion Rechargeable battery pack 32650
Angle of light beam	120° wide beam
Color temperature	6500K
Burn time	1.5 hrs (level IV), 3 hrs (level III) 6 hrs (level II) and 15 hrs (level I)
Maximum depth	100 m tested
Size	Dia. 44 x L 121.1 mm
Weight in air	318 g (including battery)
Buoyancy in seawater	-167 g (including battery)
Switching system	Push button with battery indicator
Front glass	Tempered optical glass
Lanyard	Included

1. 4 levels of brightness for Flood beam mode, 1 level of brightness of Red color mode and SOS controlled by a reliable push button design
2. Battery level indicator built-in: Blue color /Green color / Red color / Flash Red color
3. BATCELL 32650 Li ion Rechargeable Battery
4. Built-in red color led enhances focusing performance

5. Comes with ball joint for easy system setup
6. Removable yellow filter enhances warmer color tone
7. Sturdy glove for hands-free operation underwater
8. Comes with random color outdoor dry bag





# CB60000P

Li ion Rechargeable Battery  
Huge Power LED Video Light with  
High Color Rendering Index



**60000  
LUMENS**  
Angle of light beam  
**160° wide beam**

## SPECIFICATIONS

Light source	COB LED + 20 x XPE Red LED
Light output	6000 Lm (level I), 15000 Lm (level II) 30000 Lm (level III), 60000 Lm (level IV)
Light output ( Red color mode)	2000 Lm
Casing material	Aluminum alloy. Anti-corrosive anodized
Power source	Li ion Rechargeable battery pack 2xBATCELL60000
Angle of light beam	160° wide beam
Color temperature	5000K
Color Rendering Index	Ra 85
Burn time	1.5 hrs (level IV), 3 hrs (level III) 6 hrs (level II) and 15 hrs (level I)
Maximum depth	100 m tested
Size	Dia. 120 x L. 240 mm
Weight in air	3766g (including battery)
Buoyancy in seawater	-1107g (including battery)
Switching system	Push button with battery indicator
Front glass	Tempered optical glass

1. 4 levels of brightness, 1 level of brightness of Red color mode and SOS controlled by a reliable push button design. Press two keys at the same time to come up 100%, 50%, 25%, 10% four power level setting.
2. Battery level indicator built-in: Blue color /Green color / Red color / Flash Red color
3. 2xBATCELL60000 Li ion Rechargeable Battery
4. Built-in red color led enhances focusing performance

5. Easy to charge up the battery pack BATCELL60000
6. COB LED to provide 60000 lumens
7. Comes with ball joint for easy system setup
8. Make use of double clip and single arm to make the handle. Comes in a package.
9. Comes with protective case for CB 60000P.





# CB30000P II

Li ion Rechargeable Battery Ultra Power  
LED Video Light with High Color  
Rendering Index



## SPECIFICATIONS

Light source	COB LED + 10 x XPE Red LED
Light output	3000 Lm (level I), 7500 Lm (level II) 15000 Lm (level III), 30000 Lm (level IV)
Light output ( Red color mode)	1200 Lm
Casing material	Aluminum alloy. Anti-corrosive anodized
Power source	Li ion Rechargeable battery pack BATCELL21700x8
Angle of light beam	160° wide beam
Color temperature	5000K
Color Rendering Index	Ra 85
Burn time	1.5 hrs (level IV), 3 hrs (level III) 6 hrs (level II) and 15 hrs (level I)
Maximum depth	100 m tested
Size	Dia. 85 x L 144.6mm
Vweight in air	1391g (including battery)
Buoyancy in seawater	-597g (including battery)
Switching system	Push button with battery indicator
Front glass	Tempered optical glass

**30000  
LUMENS**  
Angle of light beam  
**160° wide beam**

1. 4 levels of brightness 1 level of brightness of Red color mode and SOS controlled by a reliable push button design
2. Battery level indicator built-in: Blue color /Green color / Red color / Flash Red color
3. BATCELL21700x8 Li ion Rechargeable Battery
4. Built-in red color led enhances focusing performance
5. COB LED to provide 30000 lumens
6. Comes with ball joint for easy system setup
7. Ergonomic aluminum handle comes in a package
8. Comes with protective case for CB30000P II.





# CB15000P

Li ion Rechargeable Battery Super Power  
LED Video Light with High Color  
Rendering Index



15000  
lumens



## SPECIFICATIONS

Light source	COB LED + 8 x XPE Red LED
Light output	1500 Lm (level I), 3750 Lm (level II) 7500 Lm (level III), 15000 Lm (level IV)
Light output ( Red color mode)	1000 Lm
Casing material	Aluminum alloy. Anti-corrosive anodized
Power source	Li ion Rechargeable battery pack BATCELL18650x7
Angle of light beam	160° wide beam
Color temperature	5000K
Color Rendering Index	Ra 85
Burn time	1.5 hrs (level IV), 3 hrs (level III) 6 hrs (level II) and 15 hrs (level I)
Maximum depth	100 m tested
Size	Dia. 70 x L. 136mm
Weight in air	776g (including battery)
Buoyancy in seawater	-317g (including battery)
Switching system	Push button with battery indicator
Front glass	Tempered optical glass
Lanyard	Included

**15000  
LUMENS**  
Angle of light beam  
**160° wide beam**

1. 4 levels of brightness 1 level of brightness of Red color mode and SOS controlled by a reliable push button design
2. Battery level indicator built-in: Blue color /Green color / Red color / Flash Red color
3. BATCELL18650x7 Li ion Rechargeable Battery
4. Built-in red color led enhances focusing performance
5. COB LED to provide 15000 lumens
6. Comes with ball joint for easy system setup
7. Ergonomic aluminum handle comes in a package
8. Comes with protective case for CB15000P.
9. FILFLUORO15000 Fluorodrive filter for CB15000P. Sold separately.





# CB10000P

Li ion Rechargeable Battery High Power  
LED Video Light with High Color  
Rendering Index



## SPECIFICATIONS

Light source	COB LED + 6 x XPE Red LED
Light output	1000 Lm (level I), 2500 Lm (level II) 5000 Lm (level III), 10000 Lm (level IV)
Light output ( Red color mode)	500 Lm
Casing material	Aluminum alloy. Anti-corrosive anodized
Power source	Li ion Rechargeable battery pack BATCELL 21700x4
Angle of light beam	120° wide beam
Color temperature	5000K
Color Rendering Index	Ra 85
Burn time	1.5 hrs (level IV), 3 hrs (level III) 6 hrs (level II) and 15 hrs (level I)
Maximum depth	100 m tested
Size	Dia. 63 x L 134.6mm
Weight in air	654g (including battery)
Buoyancy in seawater	-273g (including battery)
Switching system	Push button with battery indicator
Front glass	Tempered optical glass
Lanyard	Included

1. 4 levels of brightness 1 level of brightness of Red color mode and SOS controlled by a reliable push button design
2. Battery level indicator built-in: Blue color /Green color / Red color / Flash Red color
3. BATCELL21700x4 Li ion Rechargeable Battery

4. Built-in red color led enhances focusing performance
5. Snoot connector for CB 10000P. Sold separately.
6. Sturdy glove for hands-free operation underwater
7. Comes with ball joint for easy system setup
8. Comes with random color outdoor dry bag





# CB6500P

Li ion Rechargeable Battery High Power  
LED Video Light with High  
Color Rendering Index



## SPECIFICATIONS

Light source	COB LED + 6 x XPE Red LED
Light output	650 Lm (level I), 1625 Lm (level II) 3250 Lm (level III), 6500 Lm (level IV)
Light output (Red color mode)	500 Lm
Casing material	Aluminum alloy. Anti-corrosive anodized
Power source	Li ion Rechargeable battery pack BATCELL 21700x4
Angle of light beam	120° wide beam
Color temperature	5000K
Color Rendering Index	Ra 85
Burn time	2 hrs (level IV), 4 hrs (level III) 8 hrs (level II) and 20 hrs (level I)
Maximum depth	100 m tested
Size	Dia. 63 x L 134.6mm
Weight in air	653g (including battery)
Buoyancy in seawater	-272g (including battery)
Switching system	Push button with battery indicator
Front glass	Tempered optical glass
Lanyard	Included

1. 4 levels of brightness 1 level of brightness of Red color mode and SOS controlled by a reliable push button design
2. Battery level indicator built-in: Blue color /Green color / Red color / Flash Red color
3. BATCELL21700x4 Li ion Rechargeable Battery
4. Built-in red color led enhances focusing performance

5. Snoot connector for CB 6500P. Sold separately.
6. Sturdy glove for hands-free operation underwater
7. Comes with ball joint for easy system setup
8. Comes with random color outdoor dry bag





# VTL10000P

Li ion Rechargeable Battery High Power  
LED Video / Tech Light



## SPECIFICATIONS

Light source	16 x XML LED
Light output ( Flood beam mode )	1000 Lm (level I), 2500 Lm (level II) 5000 Lm (level III), 10000 Lm (level IV)
Light output ( Spot beam mode )	1300 Lm
Casing material	Aluminum alloy. Anti-corrosive anodized
Power source	Li ion Rechargeable battery pack BATCELL18650x4
Angle of light beam	120° wide beam and 10° narrow beam
Color temperature	6500K
Burn time	2.5 hrs (level IV), 5 hrs (level III) 10 hrs (level II) and 25 hrs (level I)
Maximum depth	100 m tested
Size	Dia. 63x L. 150.3mm
Weight in air	548g (including battery)
Buoyancy in seawater	-203g (including battery)
Switching system	Push button with battery indicator
Front glass	Tempered optical glass
Lanyard	Included

**120°**  
Wide Beam  
**10°**  
Narrow Beam

1. 4 Levels of brightness for Flood beam mode, and 1 level of brightness for Spot beam mode controlled by a reliable push button design
2. Battery level indicator built-in: Blue color / Green color / Red color / Flash Red color
3. Angle of light beam
4. Removable red filter enhances focusing performance
5. Removable yellow filter enhances warmer color tone
6. Sturdy glove for hands-free operation underwater
7. Comes with ball joint for easy system setup
8. BATCELL18650x4 Li ion Rechargeable Battery
9. Comes with random color outdoor dry bag





# VTL8000P MAX

Li ion Rechargeable Battery High Power  
LED Video / Tech Light



## SPECIFICATIONS

Light source	13 x LED + 6 x XPE Red LED
Light output ( Flood beam mode )	2000 Lm (level I) 4000 Lm (level II), 8000 Lm (level III)
Light output ( Spot beam mode)	650 Lm (level I) 1300 Lm (level II), 2600 Lm (level III)
Light output ( Red color mode)	500 Lm
Casing material	Aluminum alloy. Anti-corrosive anodized
Power source	Li ion Rechargeable battery pack BATCELL I8650x4
Angle of light beam	120° wide beam and 10° narrow beam
Color temperature	6500K
Burn time	3 hrs (level III), 6 hrs (level II) and 12 hrs (level I)
Maximum depth	100 m tested
Size	Dia. 63x L 150.3mm
Weight in air	548g (including battery)
Buoyancy in seawater	-203g (including battery)
Switching system	Push button with battery indicator
Front glass	Tempered optical glass
Lanyard	Included

**120°**  
Wide Beam  
**10°**  
Narrow Beam

- 3 Levels of brightness for Flood beam mode, 3 levels of brightness for Spot beam mode and 1 level of brightness for Red color mode controlled by a reliable push button design
- Battery level indicator built-in: Blue color / Green color / Red color / Flash Red color
- Angle of light beam
- Built-in red color led enhances focusing performance

- Removable yellow filter enhances warmer color tone
- Sturdy glove for hands-free operation underwater
- Comes with ball joint for easy system setup
- BATCELL I8650x4 Li ion Rechargeable Battery
- Comes with random color outdoor dry bag





# VTL8000<sup>P</sup> Backmount

Li ion Rechargeable Battery  
High Power LED Video/  
Tech Light with Battery Canister



8000  
lumens



120°  
Wide Beam  
10°  
Narrow Beam



## SPECIFICATIONS

Light source	11 x XML LED + 6 x XPE Red LED
Light output ( Flood beam mode )	800 Lm (level I), 2000 Lm (level II) 4000 Lm (level III), 8000 Lm (level IV)
Light output ( Spot beam mode )	1200 Lm
Light output ( Red color mode )	500 Lm
Casing material	Aluminum alloy. Anti-corrosive anodized
Power source	Li ion Rechargeable battery pack BATCELLCANISTER

Angle of light beam	120° wide beam and 10° narrow beam
Color temperature	6500K
Burn time	6 hrs (level IV), 12 hrs (level III) 24 hrs (level II) and 60 hrs (level I)

Maximum depth	100 m tested
Size (Light head)	Dia. 63x L. 106.5mm
Size (Canister)	Dia. 60 x L. 202mm

Weight in air (Light head)	317g
Weight in air (Canister)	975g

Buoyancy in seawater (Light head)	-101g
--------------------------------------	-------

Buoyancy in seawater (Canister)	-384g
------------------------------------	-------

Switching system	Push button with battery indicator
Cable Length	1.2 meters
Front glass	Tempered optical glass

- 4 Levels of brightness for Flood beam mode, 1 levels of brightness for Spot beam mode and 1 level of brightness for Red color mode controlled by a reliable push button design
- Battery level indicator built-in: Blue color / Green color / Red color / Flash Red color
- Angle of light beam
- BATCELLCANISTER Li ion Rechargeable Battery
- Built-in red color led enhances focusing performance
- Removable yellow filter enhances warmer color tone
- Easy to charge up the battery BATCELLCANISTER
- Comes with ball joint for easy system setup
- Slim fit Goodman handle with connector. Comes in a package
- Comes with protective case for VTL 8000P Backmount.

# VTL8000<sup>P</sup> Sidemount

Li ion Rechargeable Battery  
High Power LED Video/  
Tech Light with Battery Canister



8000  
lumens



120°  
Wide Beam  
10°  
Narrow Beam



## SPECIFICATIONS

Light source	11 x XML LED + 6 x XPE Red LED
Light output ( Flood beam mode )	800 Lm (level I), 2000 Lm (level II) 4000 Lm (level III), 8000 Lm (level IV)
Light output ( Spot beam mode )	1200 Lm
Light output ( Red color mode )	500 Lm
Casing material	Aluminum alloy. Anti-corrosive anodized
Power source	Li ion Rechargeable battery pack BATCELLCANISTER

Angle of light beam	120° wide beam and 10° narrow beam
Color temperature	6500K
Burn time	6 hrs (level IV), 12 hrs (level III) 24 hrs (level II) and 60 hrs (level I)

Maximum depth	100 m tested
Size (Light head)	Dia. 63x L. 106.5mm
Size (Canister)	Dia. 60 x L. 212mm

Weight in air (Light head)	317g
Weight in air (Canister)	1033g

Buoyancy in seawater (Light head)	-101g
--------------------------------------	-------

Buoyancy in seawater (Canister)	-407g
------------------------------------	-------

Switching system	Push button with battery indicator
Cable Length	1.35 meters
Front glass	Tempered optical glass

- 4 Levels of brightness for Flood beam mode, 1 levels of brightness for Spot beam mode and 1 level of brightness for Red color mode controlled by a reliable push button design
- Battery level indicator built-in: Blue color / Green color / Red color / Flash Red color
- Angle of light beam
- BATCELLCANISTER Li ion Rechargeable Battery
- Built-in red color led enhances focusing performance
- Removable yellow filter enhances warmer color tone
- Easy to charge up the battery BATCELLCANISTER
- Comes with ball joint for easy system setup
- Slim fit Goodman handle with connector. Comes in a package
- Comes with protective case for VTL 8000P Sidemount.



# VTL8000P

Li ion Rechargeable Battery High Power  
LED Video / Tech Light



## SPECIFICATIONS

Light source	11 x XML LED + 6 x XPE Red LED
Light output ( Flood beam mode )	800 Lm (level I), 2000 Lm (level II) 4000 Lm (level III), 8000 Lm (level IV)
Light output ( Spot beam mode )	1200 Lm
Light output ( Red color mode )	500 Lm
Casing material	Aluminum alloy. Anti-corrosive anodized
Power source	Li ion Rechargeable battery pack BATCELL18650x4
Angle of light beam	120° wide beam and 10° narrow beam
Color temperature	6500K
Burn time	3 hrs (level IV), 6 hrs (level III) 12 hrs (level II) and 30 hrs (level I)
Maximum depth	100 m tested
Size	Dia. 63x L. 150.3mm
Weight in air	548g (including battery)
Buoyancy in seawater	-203g (including battery)
Switching system	Push button with battery indicator
Front glass	Tempered optical glass
Lanyard	Included

**120°**  
Wide Beam  
**10°**  
Narrow Beam

1. 4 Levels of brightness for Flood beam mode, 1 level of brightness for Spot beam mode and 1 level of brightness for Red color mode controlled by a reliable push button design
2. Battery level indicator built-in: Blue color / Green color / Red color / Flash Red color
3. Angle of light beam
4. Built-in red color led enhances focusing performance
5. Removable yellow filter enhances warmer color tone
6. Sturdy glove for hands-free operation underwater
7. Comes with ball joint for easy system setup
8. BATCELL18650x4 Li ion Rechargeable Battery
9. Comes with random color outdoor dry bag





# VTL3800P

Li ion Rechargeable  
Battery LED Video / Tech Light



**120°**  
Wide Beam  
**10°**  
Narrow Beam

## SPECIFICATIONS

Light source	7 x XML LED + 2 x XPE Red LED
Light output ( Flood beam mode)	380 Lm (level I), 950 Lm (level II) 1900 Lm (level III), 3800 Lm (level IV)
Light output ( Spot beam mode)	1200 Lm
Light output ( Red color mode)	100 Lm
Casing material	Aluminum alloy. Anti-corrosive anodized
Power source	Li ion Rechargeable battery pack 32650
Angle of light beam	120° wide beam and 10° narrow beam
Color temperature	6500K
Burn time	1.5 hrs (level IV), 3 hrs (level III) 6 hrs (level II) and 15 hrs (level I)
Maximum depth	100 m tested
Size	Dia. 55.5 x L 140.6 mm
Weight in air	432 g (including battery)
Buoyancy in seawater	-205 g (including battery)
Switching system	Push button with battery indicator
Front glass	Tempered optical glass
Lanyard	Included



1. 4 Levels of brightness for Flood beam mode, 1 level of brightness for Spot beam mode and 1 level of brightness for Red color mode controlled by a reliable push button design
2. Battery level indicator built-in: Blue color /Green color /Red color /Flash Red color
3. Angle of light beam
4. Sturdy glove for hands-free operation underwater
5. Built-in red color led enhances focusing performance.
6. Removable yellow filter enhances warmer color tone
7. Comes with ball joint for easy system setup
8. BATCELL 32650 Li ion Rechargeable Battery
9. Comes with random color outdoor dry bag

# VTL2600P

Li ion Rechargeable Battery LED Video /  
Tech Light



Available in 3 colors

**100°**  
Wide Beam  
**10°**  
Narrow Beam

## SPECIFICATIONS

Light source	7 x LED + 2 x XPE Red LED
Light output ( Flood beam mode)	260 Lm (level I), 650 Lm (level II) 1300 Lm (level III), 2600 Lm (level IV)
Light output ( Spot beam mode)	1000 Lm
Light output ( Red color mode)	100 Lm
Casing material	Aluminum alloy. Anti-corrosive anodized
Power source	Li ion Rechargeable battery pack 32650
Angle of light beam	100° wide beam and 10° narrow beam
Color temperature	6500K
Burn time	1.5 hrs (level IV), 3 hrs (level III) 6 hrs (level II) and 15 hrs (level I)
Maximum depth	100 m tested
Size	Dia. 44 x L 128.7 mm
Weight in air	339 g (including battery)
Buoyancy in seawater	-177 g (including battery)
Switching system	Push button with battery indicator
Front glass	Tempered optical glass
Lanyard	Included



1. 4 Levels of brightness for Flood beam mode, 1 level of brightness for Spot beam mode and 1 level of brightness for Red color mode controlled by a reliable push button design
2. Battery level indicator built-in: Blue color /Green color /Red color /Flash Red color
3. Angle of light beam
4. Sturdy glove for hands-free operation underwater
5. Built-in red color led enhances focusing performance.
6. Removable yellow filter enhances warmer color tone
7. Comes with ball joint for easy system setup
8. BATCELL 32650 Li ion Rechargeable Battery
9. Comes with random color outdoor dry bag



# TL8000P

Li ion Rechargeable Battery Super Power LED Tech Light

8000 lumens



## SPECIFICATIONS

Light source	8 x LED
Light output	800 Lm (level I), 2000 Lm (level II) 4000 Lm (level III), 8000 Lm (level IV)
Casing material	Aluminum alloy. Anti-corrosive anodized
Power source	Li ion Rechargeable battery pack BATCELL18650x7
Angle of light beam	10° narrow beam
Color temperature	6500K
Burn time	2 hrs (level IV), 4 hrs (level III) 8 hrs (level II) and 20 hrs (level I)
Maximum depth	150 m tested
Size	Dia. 72 x L 143.8 mm
Weight in air	787 g (including battery)
Buoyancy in sea-water	-293 g (including battery)
Switching system	Push button with battery indicator
Front glass	Tempered optical glass
Lanyard	Included

1. 4 levels of brightness and SOS controlled by a reliable push button design
2. Battery level indicator built-in: Blue color /Green color / Red color / Flash Red color
3. BATCELL18650x7 Li ion Rechargeable Battery
4. Ergonomic aluminum handle comes in a package
5. Slim fit Goodman handle with connector. Comes in a package
6. Comes with random color outdoor dry bag



# TL4800P<sup>P</sup> Backmount

Li ion Rechargeable Battery  
High Power LED Tech Light  
with Battery Canister



4800  
lumens



## SPECIFICATIONS

Light source	4 x XML LED
Light output	480 Lm (level I), 1200 Lm (level II) 2400 Lm (level III), 4800 Lm (level IV)
Casing material	Aluminum alloy. Anti-corrosive anodized
Power source	Li ion Rechargeable battery pack BATCELLCANISTER
Angle of light beam	10° narrow beam
Color temperature	6500K
Burn time	7 hrs (level IV), 14 hrs (level III) 28 hrs (level II) and 70 hrs (level I)
Maximum depth	100 m tested
Size (Light head)	Dia. 72 x L. 88.3mm
Size (Canister)	Dia. 60 x L. 202mm
Weight in air (Light head)	380g
Weight in air (Canister)	975g
Buoyancy in seawater (Light head)	-134g
Buoyancy in seawater (Canister)	-384g
Switching system	Push button with battery indicator
Cable Length	1.2 meters
Front glass	Tempered optical glass



1. 4 Levels of brightness and SOS controlled by a reliable push button design
2. Battery level indicator built-in: Blue color / Green color / Red color / Flash Red color
3. BATCELLCANISTER Li ion Rechargeable Battery
4. Slim fit Goodman handle with connector. Comes in a package
5. Easy to charge up the battery BATCELLCANISTER
6. Comes with protective case for TL 4800P Backmount.

# TL4800P<sup>P</sup> Sidemount

Li ion Rechargeable Battery  
High Power LED Tech Light  
with Battery Canister



4800  
lumens



## SPECIFICATIONS

Light source	4 x XML LED
Light output	480 Lm (level I), 1200 Lm (level II) 2400 Lm (level III), 4800 Lm (level IV)
Casing material	Aluminum alloy. Anti-corrosive anodized
Power source	Li ion Rechargeable battery pack BATCELLCANISTER
Angle of light beam	10° narrow beam
Color temperature	6500K
Burn time	7 hrs (level IV), 14 hrs (level III) 28 hrs (level II) and 70 hrs (level I)
Maximum depth	100 m tested
Size (Light head)	Dia. 72 x L. 88.3mm
Size (Canister)	Dia. 60 x L. 212mm
Weight in air (Light head)	380g
Weight in air (Canister)	1033g
Buoyancy in seawater (Light head)	-134g
Buoyancy in seawater (Canister)	-407g
Switching system	Push button with battery indicator
Cable Length	1.35 meters
Front glass	Tempered optical glass



1. 4 Levels of brightness and SOS controlled by a reliable push button design
2. Battery level indicator built-in: Blue color / Green color / Red color / Flash Red color
3. BATCELLCANISTER Li ion Rechargeable Battery
4. Slim fit Goodman handle with connector. Comes in a package
5. Easy to charge up the battery BATCELLCANISTER
6. Comes with protective case for TL 4800P Sidemount.



# TL4800P

Li ion Rechargeable Battery High Power LED Tech Light



## SPECIFICATIONS

Light source	4 x XML LED
Light output	480 Lm (level I), 1200 Lm (level II) 2400 Lm (level III), 4800 Lm (level IV)
Casing material	Aluminum alloy. Anti-corrosive anodized
Power source	Li ion Rechargeable battery pack BATCELL18650x4
Angle of light beam	10° narrow beam
Color temperature	6500K
Burn time	2 hrs (level IV), 4 hrs (level III) 8 hrs (level II) and 20 hrs (level I)
Maximum depth	150 m tested
Size	Dia. 72 x L. 150.3mm
Weight in air	596 g (including battery)
Buoyancy in sea-water	-222 g (including battery)
Switching system	Push button with battery indicator
Front glass	Tempered optical glass
Lanyard	Included

1. 4 levels of brightness and SOS controlled by a reliable push button design
2. Battery level indicator built-in: Blue color /Green color / Red color / Flash Red color
3. BATCELL18650x4 Li ion Rechargeable
4. Sturdy Goodman Glove for handy Tech-dive operation
5. Ergonomic aluminum handle comes in a package
6. Goodman handle with connector or Slim fit Goodman handle with connector. Sold separately.
7. Comes with random color outdoor dry bag





# TL3500P<sup>Supreme</sup>

Li ion Rechargeable Battery  
LED Tech Light



## SPECIFICATIONS

Light source	3 x XML LED
Light output	350 Lm (level I), 875 Lm (level II) 1750 Lm (level III), 3500 Lm (level IV)
Casing material	Aluminum alloy. Anti-corrosive anodized
Power source	Li ion Rechargeable battery pack BATCELL I8650x4 SUPREME
Angle of light beam	10° narrow beam
Color temperature	6500K
Burn time	3 hrs (level IV), 6 hrs (level III) 12 hrs (level II) and 30 hrs (level I)
Maximum depth	150 m tested
Size	Dia. 63x L 119 mm
Weight in air	517 g (including battery)
Buoyancy in seawater	-221 g (including battery)
Switching system	Push button with battery indicator
Front glass	Tempered optical glass
Lanyard	Included



1. 4 Levels of brightness and SOS controlled by a reliable push button design
2. Battery level indicator built-in: Blue color /Green color /Red color /Flash Red color
3. Ergonomic aluminum handle comes in a package
4. BATCELL I8650x4 SUPREME Li ion Rechargeable Battery
5. Sturdy Goodman Glove for handy Tech-divide operation
6. Goodman handle with connector or Slim fit Goodman handle with connector. Sold separately.
7. Comes with random color outdoor dry bag

# TL3500P

Li ion Rechargeable Battery  
LED Tech Light



## SPECIFICATIONS

Light source	3 x XML LED
Light output	350 Lm (level I), 875 Lm (level II) 1750 Lm (level III), 3500 Lm (level IV)
Casing material	Aluminum alloy. Anti-corrosive anodized
Power source	Li ion Rechargeable battery pack 32650
Angle of light beam	10° narrow beam
Color temperature	6500K
Burn time	1.5 hrs (level IV), 3 hrs (level III) 6 hrs (level II) and 15 hrs (level I)
Maximum depth	150 m tested
Size	Dia. 63x L 135.6 mm
Weight in air	447 g (including battery)
Buoyancy in seawater	-217 g (including battery)
Switching system	Push button with battery indicator
Front glass	Tempered optical glass
Lanyard	Included



1. 4 Levels of brightness and SOS controlled by a reliable push button design
2. Battery level indicator built-in: Blue color /Green color /Red color /Flash Red color
3. Ergonomic aluminum handle comes in a package
4. BATCELL 32650 Li ion Rechargeable Battery
5. Sturdy Goodman Glove for handy Tech-divide operation
6. Goodman handle with connector or Slim fit Goodman handle with connector. Sold separately.
7. Comes with random color outdoor dry bag



# TL2600P

Li ion Rechargeable Battery  
LED Tech Light



Available in 3 colors

## SPECIFICATIONS

Light source	3 x LED
Light output	260 Lm (level I), 650 Lm (level II) 1300 Lm (level III), 2600 Lm (level IV)
Casing material	Aluminum alloy. Anti-corrosive anodized
Power source	Li ion Rechargeable battery pack 32650
Angle of light beam	10° narrow beam
Color temperature	6500K
Burn time	1.5 hrs (level IV), 3 hrs (level III) 6 hrs (level II) and 15 hrs (level I)
Maximum depth	100 m tested
Size	Dia. 50x L. 130 mm
Weight in air	359 g (including battery)
Buoyancy in seawater	-188 g (including battery)
Switching system	Push button with battery indicator
Front glass	Tempered optical glass
Lanyard	Included



- 4 Levels of brightness and SOS controlled by a reliable push button design
- Battery level indicator built-in: Blue color / Green color / Red color / Flash Red color
- Sturdy Goodman Glove for handy Tech-diver operation
- BATCELL 32650 Li ion Rechargeable Battery
- Ergonomic aluminum handle comes in a package
- Goodman handle with connector or Slim fit Goodman handle with connector. Sold separately.
- Comes with random color outdoor dry bag

# LIGHT HEAD





# AL2600 Black Molly V XWP II



Available in 2 colors

## SPECIFICATIONS

Light source	4 x XML LED + 2 x XPE Red LED
Light output	260 Lm (level I), 650 Lm (level II) 1300 Lm (level III), 2600 Lm (level IV)
Light output (Red color mode)	150 Lm
Casing material	Aluminum alloy. Anti-corrosive anodized
Power source	Li ion Rechargeable battery pack 26650
Angle of light beam	120° wide beam
Color temperature	6500K
Burn time	2 hrs (level IV), 4 hrs (level III) 8 hrs (level II) and 20 hrs (level I)
Maximum depth	100 m tested
Size	Dia. 35.5 x L 126.8 mm
Weight in air	218 g (including battery)
Buoyancy in seawater	-105 g (including battery)
Switching system	Push button with battery indicator
Front glass	Tempered optical glass
Lanyard	Included



- 4 Levels of brightness, 1 level of brightness of Red color mode and SOS controlled by a reliable push button design
- Battery level indicator built-in: Blue color /Green color /Red color /Flash Red color
- Built-in red color led enhances focusing performance
- Removable yellow filter enhances warmer color tone
- BATCELL26650 Li ion Rechargeable Battery
- Comes with ball joint for easy system setup
- Protective case for AL 2600XWP II and Single Arm Tray. Sold separately.
- Protective case for AL 2600XWP II. Sold separately.
- Comes with random color outdoor dry bag

# AL1800 Black Molly IV XWP II Tri Color



Available in 2 colors

## SPECIFICATIONS

Light source	4 x XML LED + 2 x XPE Red LED
Light output (Cool white mode)	450Lm (level I), 900 Lm (level II) 1800 Lm (level III)
Light output (Warm white mode)	450Lm (level I), 900 Lm (level II) 1800 Lm (level III)
Light output (Red color mode)	150 Lm
Casing material	Aluminum alloy. Anti-corrosive anodized
Power source	Li ion Rechargeable battery pack 26650
Angle of light beam	120° wide beam
Color temperature	6500K cool white and 5500K warm white
Burn time	2 hrs (level III), 4 hrs (level II) and 8 hrs (level I)
Maximum depth	100 m tested
Size	Dia. 35.5 x L 126.8 mm
Weight in air	218 g (including battery)
Buoyancy in seawater	-105 g (including battery)
Switching system	Push button with battery indicator
Front glass	Tempered optical glass
Lanyard	Included



- 3 Levels of brightness for cool white mode, 3 Levels of brightness for warm white mode and 1 level of brightness of Red color mode and SOS controlled by a reliable push button design
- Battery level indicator built-in: Blue color /Green color /Red color /Flash Red color
- Built-in red color led enhances focusing performance
- Built in yellow color led enhances warmer color tone
- BATCELL26650 Li ion Rechargeable Battery
- Comes with ball joint for easy system setup
- Protective case for AL 1800XWP Tri Color II and Single Arm Tray. Sold separately.
- Protective case for AL 1800XWP Tri Color II. Sold separately.
- Comes with random color outdoor dry bag



# AL1800 NP

Li ion Rechargeable Battery  
LED Light



1800  
lumens



Available in 2 colors

## SPECIFICATIONS

Light source	3 x LED
Light output	180 Lm (level I), 450 Lm (level II), 900 Lm (level III), 1800 Lm (level IV)
Casing material	Aluminum alloy. Anti-corrosive anodized
Power source	Li ion Rechargeable battery pack 26650
Angle of light beam	10° narrow beam
Color temperature	6500K
Burn time	2 hrs (level IV), 4 hrs (level III), 8 hrs (level II) and 20 hrs (level I)
Maximum depth	100 m tested
Size	Dia. 47 x L 133.5 mm
Weight in air	257 g (including battery)
Buoyancy in seawater	-130 g (including battery)
Switching system	Push button with battery indicator
Front glass	Tempered optical glass
Lanyard	Included



1. 4 Levels of brightness and SOS controlled by a reliable push button design
2. Battery level indicator built-in: Blue color /Green color /Red color /Flash Red color
3. BATCELL26650 Li ion Rechargeable Battery
4. Comes with random color outdoor dry bag

# AL1300 Strobe

Li ion Rechargeable Battery  
LED Strobe Light



1300  
lumens



## SPECIFICATIONS

Light source	XML LED
Light output	1300 Lm
Blinking frequency	60 pulses per minute
Casing material	Aluminum alloy. Anti-corrosive anodized
Power source	Li ion Rechargeable battery pack 18650
Angle of light beam	270°
Burn time	12 hrs
Maximum depth	150 m tested
Size	Dia. 35.5 x L 152.6 mm
Weight in air	170 g (including battery)
Buoyancy in seawater	-81 g (including battery)
Switching system	Push button with battery indicator
Lanyard	Included



1. On / Off controlled by a reliable push button design
2. Battery level indicator built-in: Blue color /Green color /Red color /Flash Red color
3. BATCELL 18650 Li ion Rechargeable Battery
4. Comes with random color outdoor dry bag
5. Blinking frequency : 60 pulses per minute



# AL1300 NP Tail

Li ion Rechargeable Battery Narrow Beam  
LED Light with Tail Switch Button



## SPECIFICATIONS

Light source	XML LED
Light output	130 Lm (level I), 325 Lm (level II) 650 Lm (level III), 1300 Lm (level IV)
Casing material	Aluminum alloy. Anti-corrosive anodized
Power source	Li ion Rechargeable battery pack 18650
Angle of light beam	10° narrow beam
Color temperature	6500K
Burn time	2 hrs (level IV), 5 hrs (level III) 10 hrs (level II) and 20 hrs (level I)
Maximum depth	150 m tested
Size	Dia. 33.2 x L. 152.2 mm
Weight in air	189 g (including battery)
Buoyancy in seawater	-87 g (including battery)
Switching system	Push button with battery indicator
Front glass	Tempered optical glass
Lanyard	Included

- 4 Levels of brightness and SOS controlled by a reliable push button design
- Battery level indicator built-in: Blue color /Green color /Red color /Flash Red color
- FILREDNP Red filter for AL1300NP Tail. Sold separately.
- BATCELL 18650 Li ion Rechargeable Battery
- Our light can fit in glove or pouch. Sold separately.
- Protective case for AL 1300NP Tail. Sold separately.
- Comes with random color outdoor dry bag

# AL1300 WP Tail

Li ion Rechargeable Battery Wide Beam  
LED Light with Tail Switch Button



## SPECIFICATIONS

Light source	XML LED
Light output	130 Lm (level I), 325 Lm (level II) 650 Lm (level III), 1300 Lm (level IV)
Casing material	Aluminum alloy. Anti-corrosive anodized
Power source	Li ion Rechargeable battery pack 18650
Angle of light beam	85° wide beam
Color temperature	6500K
Burn time	2 hrs (level IV), 5 hrs (level III) 10 hrs (level II) and 20 hrs (level I)
Maximum depth	100 m tested
Size	Dia. 35.5 x L. 137.7 mm
Weight in air	177 g (including battery)
Buoyancy in seawater	-88 g (including battery)
Switching system	Push button with battery indicator
Front glass	Concave lens
Lanyard	Included

- 4 Levels of brightness and SOS controlled by a reliable push button design
- Battery level indicator built-in: Blue color /Green color /Red color /Flash Red color
- Comes with the clip for easy system setup
- Snoot Connector for AL1300WP Tail. Sold separately.
- BATCELL 18650 Li ion Rechargeable Battery
- Removable red and yellow filters enhances focusing performances and warm color tone
- Our light can fit in glove or pouch. Sold separately.
- Protective case for AL 1300WP Tail. Sold separately.
- Comes with random color outdoor dry bag



# AL1200 Camouflage NP II

Li ion Rechargeable Battery  
Narrow Beam LED Light



Available in 4 colors

## SPECIFICATIONS

Light source	XML LED
Light output	120 Lm (level I), 300 Lm (level II) 600 Lm (level III), 1200 Lm (level IV)
Casing material	Aluminum alloy. Anti-corrosive anodized
Power source	Li ion Rechargeable battery pack 18650
Angle of light beam	10° narrow beam
Color temperature	6500K
Burn time	2 hrs (level IV), 5 hrs (level III) 10 hrs (level II) and 20 hrs (level I)
Maximum depth	150 m tested
Size	Dia. 33.2 x L. 139.8 mm
Weight in air	168 g (including battery)
Buoyancy in seawater	-76 g (including battery)
Switching system	Push button with battery indicator
Front glass	Tempered optical glass
Lanyard	Included



1. 4 Levels of brightness and SOS controlled by a reliable push button design
2. Battery level indicator built-in: Blue color /Green color /Red color /Flash Red color
3. FILREDNP Red filter for AL1200NP II. Sold separately.
4. BATCELL 18650 Li ion Rechargeable Battery
5. Our light can fit in glove or pouch. Sold separately.
6. Comes with random color outdoor dry bag



# AL450 Camouflage NM Tail Spotter

Narrow Beam Aluminum LED Light  
with Tail Switch Button



Available in 2 colors

## SPECIFICATIONS

- 450 Lumens Cree LED
- Size : Dia.42 x L.125.4mm
- Aluminum Alloy, anti-corrosive anodized
- 3xAAA alkaline or Ni-MH batteries
- Angle of light beam: 8°
- Up to 4hrs of burn time
- Lanyard included
- 185g ( including batteries) weight in air
- -79g ( including batteries) buoyancy in seawater
- Switching System : Push Button



1. Push on / off button on the bottom
2. 3xAAA stand-alone battery holder
3. AL 450NM Tail LED with Glove
4. AL 450NM Tail LED with Pouch
5. AL 450NM Tail LED with Pouch and Glove



# AL450 Camouflage WM Tail

LED Aluminum Diving Light with Tail Switch Button



450 lumens



Available in 2 colors

## SPECIFICATIONS

- 450 Lumens Cree LED
- Size : Dia.36 x L.122.6mm
- Aluminum Alloy, anti-corrosive anodized
- 3xAAA alkaline or Ni-MH batteries
- Angle of light beam: 40°
- Up to 4hrs of burn time
- Lanyard included
- 160g ( including batteries) weight in air
- -74g ( including batteries) buoyancy in seawater
- Switching System : Push Button



1. Push on / off button on the bottom
2. 3xAAA stand-alone battery holder
3. AL 450WM Tail LED with Glove
4. AL 450WM Tail LED with Pouch
5. AL 450WM Tail LED with Pouch and Glove

# AL250 Camouflage

Multi-Function Aluminum LED Light



250 lumens



Available in 2 colors

## SPECIFICATIONS

Light source	1 x XPG LED
Light output	250 Lm
Casing material	Aluminum alloy. Anti-corrosive anodized
Power source	2xAA alkaline or Ni-MH batteries
Angle of light beam	8° narrow beam
Color temperature	6500K
Burn time	Up to 2 hrs
Maximum depth	100 m tested
Size	Dia. 28x L. 147.8 mm
Weight in air	135 g (including battery)
Buoyancy in seawater	-85 g (including battery)
Front glass	Tempered optical glass
Lanyard	Included



1. Light is suitable for multi-function
2. Operate with 2xAA batteries
3. Our light can fit in glove or pouch. Sold separately.



# AL1300<sub>NP</sub>

Li ion Rechargeable Battery  
Narrow Beam LED Light



## SPECIFICATIONS

Light source	XML LED
Light output	130 Lm (level I), 325 Lm (level II) 650 Lm (level III), 1300 Lm (level IV)
Casing material	Aluminum alloy. Anti-corrosive anodized
Power source	Li ion Rechargeable battery pack 18650
Angle of light beam	10° narrow beam
Color temperature	6500K
Burn time	2 hrs (level IV), 5 hrs (level III) 10 hrs (level II) and 20 hrs (level I)
Maximum depth	150 m tested
Size	Dia. 33.2 x L 139.8 mm
Weight in air	168 g (including battery)
Buoyancy in seawater	-76 g (including battery)
Switching system	Push button with battery indicator
Front glass	Tempered optical glass
Lanyard	Included



1. 4 Levels of brightness and SOS controlled by a reliable push button design
2. Battery level indicator built-in: Blue color /Green color /Red color /Flash Red color
3. FILREDNP Red filter for AL1300NP. Sold separately.
4. BATCELL 18650 Li ion Rechargeable Battery
5. Our light can fit in glove or pouch. Sold separately.
6. Protective case for AL 1300NP. Sold separately.
7. Comes with random color outdoor dry bag

# AL1300<sub>WP</sub>

Li ion Rechargeable Battery  
Wide Beam LED Light



## SPECIFICATIONS

Light source	XML LED
Light output	130 Lm (level I), 325 Lm (level II) 650 Lm (level III), 1300 Lm (level IV)
Casing material	Aluminum alloy. Anti-corrosive anodized
Power source	Li ion Rechargeable battery pack 18650
Angle of light beam	85° wide beam
Color temperature	6500K
Burn time	2 hrs (level IV), 5 hrs (level III) 10 hrs (level II) and 20 hrs (level I)
Maximum depth	100 m tested
Size	Dia. 35.5 x L 126.3 mm
Weight in air	162 g (including battery)
Buoyancy in seawater	-84 g (including battery)
Switching system	Push button with battery indicator
Front glass	Concave lens
Lanyard	Included



1. 4 Levels of brightness and SOS controlled by a reliable push button design
2. Battery level indicator built-in: Blue color /Green color /Red color /Flash Red color
3. Comes with the clip for easy system setup
4. Snoot Connector for AL1300WP. Sold separately.
5. BATCELL 18650 Li ion Rechargeable Battery
6. Removable red and yellow filters enhances focusing performances and warm color tone
7. Our light can fit in glove or pouch. Sold separately.
8. Protective case for AL 1300WP. Sold separately.
9. Comes with random color outdoor dry bag



# AL1300<sub>XWP</sub>

Li ion Rechargeable Battery Extra Wide Beam LED Light



## SPECIFICATIONS

Light source	XML LED
Light output	130 Lm (level I), 325 Lm (level II) 650 Lm (level III), 1300 Lm (level IV)
Casing material	Aluminum alloy. Anti-corrosive anodized
Power source	Li ion Rechargeable battery pack 18650
Angle of light beam	120° wide beam
Color temperature	6500K
Burn time	2 hrs (level IV), 5 hrs (level III) 10 hrs (level II) and 20 hrs (level I)
Maximum depth	100 m tested
Size	Dia. 35.5 x L. 122.1 mm
Weight in air	160 g (including battery)
Buoyancy in seawater	-84 g (including battery)
Switching system	Push button with battery indicator
Front glass	Tempered optical glass
Lanyard	Included

- 4 Levels of brightness and SOS controlled by a reliable push button design
- Battery level indicator built-in: Blue color /Green color /Red color /Flash Red color
- Comes with the clip for easy system setup
- Snoot Connector for AL1300XWP.Sold separately.
- BATCELL 18650 Li ion Rechargeable Battery
- Removable red and yellow filters enhances focusing performances and warm color tone
- Our light can fit in glove or pouch. Sold separately.
- Protective case for AL 1300XWP.Sold separately.
- Comes with random color outdoor dry bag

# AL1200<sub>RAFO</sub>

Li ion Rechargeable Battery Wide Beam LED Light with Auto-Flash Off Function



## SPECIFICATIONS

Light source	XML LED + 2 x XPE Red LED
Light output	120 Lm (level I), 300 Lm (level II) 600 Lm (level III), 1200 Lm (level IV)
Light output (Red color mode)	150 Lm
Casing material	Aluminum alloy. Anti-corrosive anodized
Power source	Li ion Rechargeable battery pack 18650
Angle of light beam	55° wide beam
Color temperature	6500K
AFO interval	0.2sec. +/- 0.1 sec.
Burn time	2 hrs (level IV), 5 hrs (level III) 10 hrs (level II) and 20 hrs (level I)
Maximum depth	100 m tested
Size	Dia. 42.4 x L. 128.3 mm
Weight in air	242 g (including battery)
Buoyancy in seawater	-129 g (including battery)
Switching system	Push button with battery indicator
Front glass	Tempered optical glass
Lanyard	Included

- 4 Levels of brightness and SOS controlled by a reliable push button design
- Battery level indicator built-in: Blue color /Green color /Red color /Flash Red color
- Comes with ball joint for easy system setup
- Automatic Flash Off Function AFO interval: 0.2 sec. +/- 0.1 sec.
- Built-in red color led enhances focusing performance
- BATCELL 18650 Li ion Rechargeable Battery
- Comes with random color outdoor dry bag



# AL450<sub>WM</sub>Tail

LED Aluminum Diving Light with Tail Switch Button

450  
lumens



## SPECIFICATIONS

- 450 Lumens Cree LED
- Size : Dia.36 x L.122.6mm
- Aluminum Alloy, anti-corrosive anodized
- 3xAAA alkaline or Ni-MH batteries
- Angle of light beam: 40°
- Up to 4hrs of burn time
- Lanyard included
- 160g ( including batteries) weight in air
- -74g ( including batteries) buoyancy in seawater
- Switching System : Push Button



A diagram showing the light being held by a gloved hand, demonstrating its use.



1. Push on / off button on the bottom
2. 3xAAA stand-alone battery holder
3. AL 450WM Tail LED with Glove
4. AL 450WM Tail LED with Pouch
5. AL 450WM Tail LED with Pouch and Glove

# AL450<sub>NM</sub>Tail Spotter

Narrow Beam Aluminum LED Light with Tail Switch Button

450  
lumens



## SPECIFICATIONS

- 450 Lumens Cree LED
- Size : Dia.42 x L.125.4mm
- Aluminum Alloy, anti-corrosive anodized
- 3xAAA alkaline or Ni-MH batteries
- Angle of light beam: 8°
- Up to 4hrs of burn time
- Lanyard included
- 185g ( including batteries) weight in air
- -79g ( including batteries) buoyancy in seawater
- Switching System : Push Button



1. Push on / off button on the bottom
2. 3xAAA stand-alone battery holder
3. AL 450NM Tail LED with Glove
4. AL 450NM Tail LED with Pouch
5. AL 450NM Tail LED with Pouch and Glove



# AL250

Multi-Function Aluminum LED Light

250  
lumens



## SPECIFICATIONS

Light source	1 x XPG LED
Light output	250 Lm
Casing material	Aluminum alloy. Anti-corrosive anodized
Power source	2xAA alkaline or Ni-MH batteries
Angle of light beam	8° narrow beam
Color temperature	6500K
Burn time	Up to 2 hrs
Maximum depth	100 m tested
Size	Dia. 28x L 147.8 mm
Weight in air	135 g (including battery)
Buoyancy in seawater	-85 g (including battery)
Front glass	Tempered optical glass
Lanyard	Included



1. Light is suitable for multi-function
2. Operate with 2xAA batteries
3. Our light can fit in glove or pouch. Sold separately.
4. Available in 5 colors

# RGB White II

Li ion Rechargeable Battery  
4 Colors LED Light



## SPECIFICATIONS

Light source	LED
Light output	500 Lm (white), 120 Lm (red) 40 Lm (blue), 300 Lm (green)
Casing material	Aluminum alloy. Anti-corrosive anodized
Power source	Li ion Rechargeable battery pack 18650
Angle of light beam	85° wide beam
Color temperature	6500K
Burn time	2 hrs
Maximum depth	100 m tested
Size	Dia. 35.5 x L 126.3 mm
Weight in air	162 g (including battery)
Buoyancy in seawater	-84 g (including battery)
Switching system	Push button with battery indicator
Front glass	Concave lens
Lanyard	Included



1. 4 colors of light and SOS controlled by a reliable push button design
2. Battery level indicator built-in: Blue color / Green color / Red color / Flash Red color
3. Comes with the clip for easy system setup
4. BATCELL 18650 Li ion Rechargeable Battery
5. Built-in red color Led
6. Built-in green color Led
7. Built-in blue color Led
8. Snoot Connector for RGB White II. Sold separately.
9. Our light can fit in glove or pouch. Sold separately.
10. Comes with random color outdoor dry bag



# CF1200P II

Li ion Rechargeable Battery  
Changeable Focus LED Light



## SPECIFICATIONS

Light source	XML LED
Light output	120 Lm (level I), 300 Lm (level II) 600 Lm (level III), 1200 Lm (level IV)
Casing material	Aluminum alloy. Anti-corrosive anodized
Power source	Li ion Rechargeable battery pack 18650
Angle of light beam	7° narrow beam to 37° wide beam
Color temperature	6500K
Burn time	2 hrs (level IV), 5 hrs (level III) 10 hrs (level II) and 20 hrs (level I)
Maximum depth	100 m tested
Size	Dia. 35.5 x L. 169.3mm
Weight in air	245 g (including battery)
Buoyancy in seawater	-121 g (including battery)
Switching system	Push button with battery indicator
Front glass	Tempered optical glass
Lanyard	Included



- 4 Levels of brightness and SOS controlled by a reliable push button design
- Battery level indicator built-in: Blue color / Green color / Red color / Flash Red color
- Twist the front to change the focus (Turning force increases with depth)
- BATCELL 18650 Li ion Rechargeable Battery
- Comes with random color outdoor dry bag

# CF450M

Changeable Focus LED Light



Available in 2 colors

## SPECIFICATIONS

Light source	Cree LED
Light output	450 Lm
Casing material	Aluminum alloy. Anti-corrosive anodized
Power source	3xAAA alkaline or Ni-MH batteries
Angle of light beam	7° to 37° adjustable
Color temperature	6500K
Burn time	Up to 4hrs
Maximum depth	100 m tested
Size	Dia. 35.5 x L. 121.5mm
Weight in air	193 g (including batteries)
Buoyancy in seawater	-81 g (including batteries)
Switching system	Magnetic Swivel
Front glass	Tempered optical glass & Convex Lens
Lanyard	Included



- Twist the front to change the focus (Turning force increases with depth)
- Magnetic Swivel Switch allows for one hand operation
- 3xAAA stand-alone battery holder
- CF 450 M LED with Pouch
- CF 450 M LED with Pouch
- CF 450 M LED with Pouch and Glove



# HL1000N

1000 lumens

Li ion Rechargeable Battery  
Narrow Beam LED Head Light



FILREDHLN Red filter for HL 1000N.  
Sold separately.



## SPECIFICATIONS

Light source	Cree LED
Light output	100 Lm (level I), 250 Lm (level II) 500 Lm (level III), 1000 Lm (level IV)
Casing material	Aluminum alloy light head and Polycarbonate body
Power source	Li ion Rechargeable battery pack BATCELL18650
Angle of light beam	8° narrow beam
Color temperature	6500K
Burn time	2 hrs (level IV), 4 hrs (level III) 8 hrs (level II) and 20 hrs (level I)
Maximum depth	100 m tested
Size	Dia. 36.8 x L. 84.4 mm with light head dia. 41mm
Weight in air	205 g (including battery)
Buoyancy in seawater	-74 g (including battery)
Switching system	Push button with battery indicator
Front glass	Tempered optical glass



4 levels of  
brightness  
and SOS controlled  
by a reliable push  
button design.



BATCELL18650  
Li ion  
Rechargeable  
Battery



Battery level  
indicator built-in:  
Blue color /  
Green color / Red  
color / Flash Red  
color

# HL450N

450 lumens

Narrow Beam LED  
Head Light



FILREDHLN Red filter for HL 450N.  
Sold separately.



## SPECIFICATIONS

Light source	Cree LED
Light output	45 Lm (level I), 113 Lm (level II) 225 Lm (level III), 450 Lm (level IV)
Casing material	Aluminum alloy light head and Polycarbonate body
Power source	3 x AAA alkaline batteries
Angle of light beam	8° narrow beam
Color temperature	6500K
Burn time	2 hrs (level IV), 4 hrs (level III) 8 hrs (level II) and 20 hrs (level I)
Maximum depth	100 m tested
Size	Dia. 36.8 x L. 84.4 mm with light head dia. 41mm
Weight in air	187 g (including batteries)
Buoyancy in seawater	-56 g (including batteries)
Switching system	Push button with battery indicator
Front glass	Tempered optical glass



4 levels of  
brightness  
and SOS controlled  
by a reliable push  
button design.



3 x AAA  
alkaline  
batteries



Battery level indicator  
built-in: Blue color /  
Green color / Red  
color / Flash Red  
color

# HL1000xw

BUILT-IN RED LIGHT

Li ion Rechargeable Battery  
Extra Wide Beam LED Head Light



Built-in red color led enhances  
focusing performance



## SPECIFICATIONS

Light source	2 x Cree LED + 2 x XPE Red LED
Light output	100 Lm (level I), 250 Lm (level II) 500 Lm (level III), 1000 Lm (level IV)
Light output (Red color mode)	150 Lm
Casing material	Aluminum alloy light head and Polycarbonate body
Power source	Li ion Rechargeable battery pack BATCELL18650
Angle of light beam	120° wide beam
Color temperature	6500K
Burn time	2 hrs (level IV), 4 hrs (level III) 8 hrs (level II) and 20 hrs (level I)
Maximum depth	100 m tested
Size	Dia. 36.8 x L. 84.4 mm with light head dia. 38.8mm
Weight in air	207 g (including battery)
Buoyancy in seawater	-76 g (including battery)
Switching system	Push button with battery indicator
Front glass	Tempered optical glass

# HL450xw

BUILT-IN RED LIGHT

Extra Wide Beam LED  
Head Light



Built-in red color led enhances  
focusing performance



## SPECIFICATIONS

Light source	2 x Cree LED + 2 x XPE Red LED
Light output	45 Lm (level I), 113 Lm (level II) 225 Lm (level III), 450 Lm (level IV)
Light output (Red color mode)	100 Lm
Casing material	Aluminum alloy light head and Polycarbonate body
Power source	3 x AAA alkaline batteries
Angle of light beam	120° wide beam
Color temperature	6500K
Burn time	2 hrs (level IV), 4 hrs (level III) 8 hrs (level II) and 20 hrs (level I)
Maximum depth	100 m tested
Size	Dia. 36.8 x L. 84.4 mm with light head dia. 38.8 mm
Weight in air	189 g (including batteries)
Buoyancy in seawater	-58 g (including batteries)
Switching system	Push button with battery indicator
Front glass	Tempered optical glass



## Green Spot light Red Spot light



### SPECIFICATIONS

### GREEN SPOT LIGHT

### RED SPOT LIGHT

Light source	Green Laser	Red Laser
Light output	Below 1 mW	Below 1 mW
Casing material	Aluminum alloy. Anti-corrosive anodized	Aluminum alloy. Anti-corrosive anodized
Power source	2 x AAA alkaline or Ni-MH batteries	2 x AAA alkaline or Ni-MH batteries
Wavelength	520nm	650nm
Burn time	Up to 12 hrs	Up to 12 hrs
Maximum depth	100 m tested	100 m tested
Size	Dia. 19 x L 168.6 mm	Dia. 19 x L 154.1 mm
Weight in air	89 g (including batteries)	82 g (including batteries)
Buoyancy in seawater	-54 g (including batteries)	-51 g (including batteries)
Switching system	Twisting Bezel	Twisting Bezel
Front glass	Tempered optical glass	Tempered optical glass
Lanyard	Included	Included



Operate with  
2 x AAA batteries



CLIPMNTSPOT  
Mounting clip for Green  
Spot Light and Red Spot  
Light Sold separately.

## Protective Case Series



Model :	PC101 A	PC102 A	PC103 A	PC104 A	PC105 A	PC106 A
Outer Dimension :	225 x 180 x 100 mm	350 x 270 x 120 mm	340 x 310 x 120 mm	360 x 285 x 190 mm	420 x 360 x 130 mm	420 x 360 x 190 mm
Inner Dimension :	200 x 135 x 85 mm	325 x 210 x 110 mm	310 x 250 x 107 mm	330 x 270 x 175 mm	380 x 310 x 120 mm	380 x 310 x 180 mm

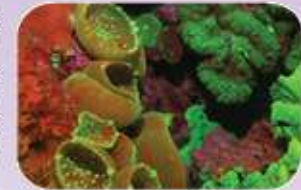
## FLUORODIVE Kit sets

Science has discovered corals contain Fluorescent Proteins invisible to the naked eye that jump into view using innovative high-intensity fluorolights and filters.

Bigblue Fluorodive Kits provide everything you need to experience this incredibly beautiful effect. You get specially designed filters to precisely match the coral fluorescence wavelength, and yellow blue-barrier filters to increase the intensity of the colors emitted by the corals. Our innovative design is the only one that allows you to easily switch between blue and white light to accommodate changes in dive conditions.

These kits are suitable for night divers, resorts, science institutions, ecological monitoring groups and specialty photographers.

Truly there is nothing that can match the beauty of witnessing coral fluorescence on your next night dive!



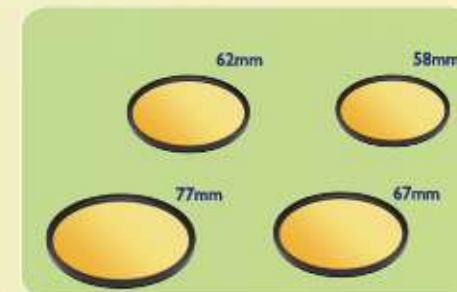
Photos of the fluorescence stimulated by the specific wavelength and captured through a barrier filter

FDK35	CF450M / CF1200P II / AL1300WP / AL1300XWP / AL1300WP Tail / BLACK MOLLY IV / BLACK MOLLY V Fluorodive Kit
FDK38	CF450 / CF1200P / AL1200WP / AL1200XWP / AL1200WP Tail / BLACK MOLLY II / BLACK MOLLY III Fluorodive Kit
FDK44	VL4200P / VTL2600P Fluorodive Kit
FDK55	VTL3800P / VL10000P / VL8000P Tri Color Fluorodive Kit
FDK63	CB6500P / CB10000P / VTL8000P / VTL8000P Max / VTL10000P / Fluorodive Kit



## Camera Filters

Camera filters are available for you to capture the macro or wide angle photos or videos of the memorable aquatic creatures.



## FILFLUOR015000

Fluorodive filter for VL 18000P Pro Mini / VL 18000P Pro Mini Tri Color / CB15000P





# COMBO PACK SERIES



**AL 450 NM Tail Spotter**  
Narrow Beam Aluminum LED Light with  
Tail Switch Button

**AL 1300NP**  
Li ion Rechargeable Battery Narrow  
Beam LED Light

**Easy Clip** Rainbow Color light



**AL 450 WM Tail**  
LED Aluminum Diving Light with  
Tail Switch Button

**AL 1300NP**  
Li ion Rechargeable Battery Narrow  
Beam LED Light

**Easy Clip** Rainbow Color light



**AL 450 NM Tail Spotter**  
Narrow Beam Aluminum LED Light with  
Tail Switch Button

**AL 1300WP**  
Li ion Rechargeable Battery Wide  
Beam LED Light

**Easy Clip** Rainbow Color light



**AL 450 WM Tail**  
LED Aluminum Diving Light with  
Tail Switch Button

**AL 1300WP**  
Li ion Rechargeable Battery Wide  
Beam LED Light

**Easy Clip** Rainbow Color light



**AL 250**  
Multi-Function Aluminum LED Light

**AL 1300NP**  
Li ion Rechargeable battery  
Narrow Beam LED Light

**Easy Clip** Rainbow Color light



**AL 250**  
Multi-Function Aluminum LED Light

**AL 1300WP**  
Li ion Rechargeable battery  
Wide Beam LED Light

**Easy Clip** Rainbow Color light





## EASY CLIP Rainbow Color Light



### SPECIFICATIONS

- Available fifteen color output –Red, Green, Orange, Blue, Purple, Yellow, Light Blue, Flash red, Flash green, Flash orange, Flash blue, Flash purple, Flash yellow, Flash light blue automatically run all fourteen modes.
- 12-24 hrs of burn time
- 2 x CR2032 batteries
- Dia. 32 x L. 38mm
- 100 meter tested
- Lanyard included
- 23g ( including batteries) weight in air
- -3g ( including batteries) buoyancy in seawater

## EASY CLIP Light with Flash



### SPECIFICATIONS

- Available six color output – Blue, Red, Green, Flash Blue, Flash Red, Flash Green
- Up to 36 hrs of burn time
- 2 x CR2032 batteries
- Dia. 32 x L. 38mm
- 100 meter tested
- Lanyard included
- 23g ( including batteries) weight in air
- -3g ( including batteries) buoyancy in seawater

## CAMERA TRAY 34



Camera Tray 34 with 34cm long tray.  
Two 1" Ball joint arms with no-slip grip.  
Compatible with Smart Phone Housings  
e.g. Iphone, Samsung, Huawei

## CAMERA TRAY 27



Camera Tray 27 with 27cm long tray.  
Two 1" Ball joint arms with no-slip grip.  
Compatible with Olympus TG4/TG5 Housings.

## BBGPTray

Go Pro Tray



Go Pro Hot Shoe Adapter



Go Pro Light Adaptor





# Go Pro Kit sets

## GP4200 Kit

- 1 pc. of Double Clip (CLP02)
- 1 pc. of Go Pro Tray (BBGPTRAY)
- Light not included



## GP1300 Kit

- 2 pcs. of Double Clip (CLP02)
- 2 pcs. of Sea & Sea Standard (DA009)
- 1 pc. of Go Pro Tray (BBGPTRAY)
- Lights not included



## GP450 Kit

- 2 pcs. of Mounting Clip (CLIPMINTCF)
- 2 pcs. of Double Clip (CLP02)
- 2 pcs. of Sea & Sea Standard (DA009)
- 1 pc. of Go Pro Tray (BBGPTRAY)
- Lights not included



## Protective Case for Go Pro Tray Kit Set

- 1 pc. of ALI300WVP
- 1 pc. of ALI300XWP
- 2 pcs. of Double Clip (CLP02)
- 2 pcs. of Sea & Sea Standard (DA009)
- 1 pc. of Go Pro Tray (BBGPTRAY)



## EXTENDGPTRAY

Extendable Go Pro Tray



Extend from 176mm to 287mm

## SINGLEARMTRAY

Single Arm Go Pro Tray



## FLEXIGPTRAY

7" Flexi Arm Go Pro Tray



## FLEXISINGLEARMTRAY

7" Flexi Arm Single Arm Tray



## FLEXIEXTENDGPTRAY

7" Flexi Arm Extendable Go Pro Tray



## TRIPOD PLATE



Size: W.112 x L.272mm  
Comes with four 1" Ball joint



Easy assemble with double clip and arms.  
Double clip and arms sold separately.

## Batteries & Chargers



BATCELL18650

Battery for ALI300NP / ALI300WP / ALI300XWP / ALI300NP Tail / ALI300WP Tail / CFI200P III / ALI200RAPO / HL1000KW / HL1000N / RGB White II / ALI200PNP IR / ALI200PWP IR / ALI300 Strobe



BATCELL26650

Battery for Black Molly IV / Black Molly V / Black Molly VB / ALI800NP



BATCELL32650

Battery for VL4200P / VTL3800P / TL3500P / VTL2600P / TL2600P / VL4200PB



CR2032

Battery for Easy Clip Light / Controller



BATCELL18650x4

Battery for VL10000P / VTL8000P / VTL8000P Max / TL4800P / VL8000P Tri Color / VTL10000P / VL10000PBRC



BATCELL21700x4

Battery for CB6500P / CB10000P / CB6500PB / CB10000PBRC

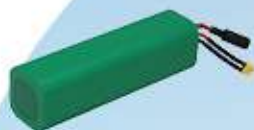


BATCELL18650x7

Battery for VL18000P Pro Mini / VL18000P Pro Mini Tri Color / CB15000P / TL8000P / VL18000PBRC / CB15000PBRC



# Batteries & Chargers



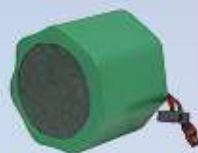
**BATCELLCANISTER**

Battery for  
TL4800P Backmount / Sidemount  
VTL8000P Backmount / Sidemount



**BATCELL18650x4SUPREME**

Battery for TL3500P Supreme



**BATCELL21700x8**

Battery for VL33000P II /  
CB30000P II / VL33000PRC



**BATCELL60000**

Battery for VL65000P /  
CB60000P



**BATCHR60000**

Charger for VL65000P /  
CB60000P



**BATCHR21700x8**

Charger for VL33000P II /  
CB30000P II / VL33000PRC



**BATCHR18650x7**

Charger for VL18000P Pro Mini /  
VL18000P Pro Mini Tri Color /  
CB15000P / TL8000P / VL18000PBC /  
CB15000PBC



**BATCHR21700x4**

Charger for CB6500P / CB10000P /  
CB6500PB / CB10000PBC



**BATCHR18650x4**

Charger for VL10000P / VTL8000P /  
TL4800P / VL8000P Tri Color / VTL8000P Max /  
VL10000PBC / VTL10000P



**BATCHR18650x4 SUPREME**

Charger for TL3500P Supreme



**BATCHR32650/26650**

Charger for  
VL4200P / VTL3800P / TL3500P /  
Black Molly IV / Black Molly V /  
VTL2600P / TL2600P / VL4200PB  
Black Molly VB / AL1800NP



**BATCHRCANISTER**

Charger for  
TL4800P Backmount / Sidemount  
VTL8000P Backmount / Sidemount



**BATCHR18650**

Charger for AL1300NP / AL1300WP /  
AL1300XWP / AL1300NP Tail /  
AL1300WP Tail / CF1200P II / AL1200RAFO /  
HL1000XW / HL1000N / RGB White II /  
AL1200NP IR / AL1200WP IR / AL1300 Strobe

# Accessories



**AF 55**

Ambient filter for  
VL10000P / VL10000PBC /  
VL8000P Tri Color



**AF 63**

Ambient filter for CB6500P /  
CB6500PB / CB10000P /  
CB10000PBC



**AF 70**

Ambient filter for VL18000P Pro Mini /  
VL18000P Pro Mini Tri Color /  
CB15000P / VL18000PBC /  
CB15000PBC

## CONTROLLER

Remote Control for VL33000PRC /  
VL18000PBC / CB15000PBC /  
VL10000PBC / CB10000PBC



**2M OPTICAL FIBRE**

2 Meters Optical fibre for VL33000PRC /  
VL18000PBC / CB15000PBC /  
VL10000PBC / CB10000PBC



**OPTICAL FIBRE**

1 Meter Optical fibre for VL33000PRC /  
VL18000PBC / CB15000PBC /  
VL10000PBC / CB10000PBC



**TLGGLOVE**

Goodman glove for any light with a  
two-prong mounting square



**NPPGGLOVE**

Neoprene glove for Mini Light



**NPPGGLOVE**

Neoprene glove for  
AL1300NP / AL1300WP /  
AL1300XWP / AL1300NP Tail /  
AL1300WP Tail / AL1200NP IR /  
AL1200WP IR



# Accessories



**PISTOLGRIPHANDLE**

Pistol Grip Handle for any light with a two-prong mounting square



**GHA-01C**

Goodman handle with connector for any light with a two-prong mounting square



**SFGHA-01C**

Slim Fit Goodman handle with connector for any light with a two-prong mounting square



**LNTHANDLE**

Lantern style handle



**FILFLUORO15000**

Fluorodive filter for CB15000P / VL18000P Pro Mini / VL18000P Pro Mini Tri Color



**FDMASKYL**

Yellow filter for Fluorodiving



**YELLOW PLATE**

Yellow plate for Fluorodiving



**SNOOT 35**

Snoot Connector for AL1300WP / AL1300XWP / AL1300WP Tail / RGB White II



**SNOOT 38**

Snoot Connector for AL1200WP / AL1200XWP / AL1200WP Tail / RGB White



**SNOOT 55**

Snoot Connector for VL6000P



**SNOOT 63**

Snoot Connector for CB6500P / CB10000P / CB6500PB / CB10000PBRC



**FILRED35**

Red filter for AL1300WP / AL1300XWP / AL1300WP Tail



**FILREDSM**

Red filter for AL1200WP / AL1200XWP / AL1200WP Tail



**FILRED63**

Red filter for VTL10000P



**FILREDNP**

Red filter for AL1300NP / AL1300NP Tail



**FILREDHLN**

Red filter for HL1000N / HL450N



**FILIYELG**

Yellow filter for VTL3800P / VL10000P / VL10000PBRC



**FILIYEL35**

Yellow filter for AL1300WP / AL1300XWP / AL1300WP Tail / Black Molly V / Black Molly VB



**FILIYEL44**

Yellow filter for VL4200P / VL4200PB / VTL2600P



**FILIYEL63**

Yellow filter for VTL8000P / VTL8000P Backmount / Sidemount / VTL8000P Max / VTL10000P



**FILIYELSM**

Yellow filter for AL1200WP / AL1200XWP / AL1200WP Tail / Black Molly III



**CLIPMNTSPOT**

Mounting clip for Green Spot Light / Red Spot Light



**CLIPMNTAL**

Mounting clip for AL1300WP / AL1300XWP / CF1200P II / AL1200WP IR



**CLIPMNTCF**

Mounting clip for CF450M / AL450WM Tail / AL1300WP Tail



**GO PRO MOUNT**

Go Pro Mount for Go Pro Camera



**1" BALL JOINT**

1" Ball Joint fit for any light with a two-prong mounting square



**SPRING CORD**

Length : 330mm



**EASY RELEASE MOUNT**

Easy Release Mount fit for helmet / DPV



**NPHOODMS**

Neoprene hood for one light holster



**NPHOODMD**

Neoprene hood for two light holster



**NPRPOUCH**

Neoprene pouch with retractor for AL1300NP / AL1300VWP / AL1300XWP / AL1300NP Tail / AL1300VWP Tail / AL1200NPIR / AL1200VPIR



**NPRPOUCHM**

Neoprene pouch with retractor for Mini Light



## Accessories

### Outdoor Dry Bags



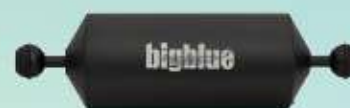
3L	5L	7L	15L	20L
Dia. 140 x L. 330 mm	Dia. 170 x L. 380 mm	Dia. 180 x L. 510 mm	Dia. 240 x L. 540 mm	Dia. 240 x L. 600 mm
Available in 5 colors Yellow, Green, Pink, Light Blue, Blue	Available in 5 colors Yellow, Green, Pink, Light Blue, Blue	Available in 6 colors Yellow, Green, Pink, Light Blue, Blue, Black	Available in 5 colors Yellow, Green, Blue, Black, Orange	Available in 5 colors Yellow, Green, Blue, Black, Orange

## Easy Release Mount Series



## Photo/Video Arms & Accessories

### Float Arms Series



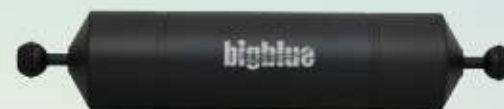
9" Float Arm

Dia. 70 x 228mm  
Weight above water : 281g  
Buoyancy lift : 360g



9" Jumbo Float Arm

Dia. 90 x 228mm  
Weight above water : 349g  
Buoyancy lift : 697g



13" Float Arm

Dia. 70 x 330mm  
Weight above water : 430g  
Buoyancy lift : 612g

### Flexi Arms Series



7" Flexi Arm



9" Flexi Arm



6" Flexi Arm  
Hot Shoe YS Adapter



6" Flexi Arm  
Hot Shoe Ball Adapter



YS Adapter



# Photo/Video Arms & Accessories

## Clips

- Made of T6061 grade aluminum
- Available in 3 versions: long double clip, double clip and a triple clip
- Ergonomic handle makes it easy to twist on and off



Long CLP02 Double clip

Length : 80mm



CLP 02 Double clip

Length : 63mm



CLP 03 Triple clip

## Arms

- Full T6061 grade aluminum
- Available in 4 lengths: 5", 8", 12", 16"



5" Arm



8" Arm



12" Arm



16" Arm

For 1" ball joint to connect to extend the connection



# DA Series



DA001

Hot Shoe Adapter



DA002

Sea & Sea Adapter



DA003

Light & Motion Adapter



DA004

Standard Dovetail Plate



DA005

8mm Thread



DA006

Sea & Sea Light Adapter



DA007

Sea & Sea Hot Shoe Adapter



DA008

Sea & Sea Medium



DA009

Sea & Sea Standard



DA010

Base Plate Ball Mount



DA011

T-Groove Adapter



DA012

Universal Mount Base



DA013F

1/4" Thread Adapter



DA013M

1/4" Thread Adapter



DA014

Ikelite 200 Strobe Adapter



DA015

Single Ball Arm with Sea & Sea Adapter



DA016

UK Light Adapter



DA017

Standard Dovetail



DA018

Inon Z Series Strobe Adapter



DA022

Slot Stay



DA023

6mm Thread Adapter

Specifications subject to change without prior notice.



# Our Distributors & Dealers



**Aruba / Bonaire / Curaçao Distributor:**  
**Palm Trading Bonaire NV**  
 Contact Person: Joyce Sonnewelt  
 E-mail: sales@palmtradingnv.com  
 Phone: 599 717 2072  
 Mail: Hanchi Amboina 5, Kralendijk  
 Bonaire Dutch Caribbean



**Australia Distributor:** **Adreno**  
 Contact Person: Robbie Lewis  
 E-mail: robbie@adreno.com.au  
 Phone: 61-07-3391-2299  
 Mail: 54-58 Doshon Street, Woolloongabba,  
 Brisbane, QLD 4102, Australia



**Austria Distributor:**  
**Custom Diving Systems**  
 Contact Person: Yannig Charles  
 E-mail: contact@cds-pro.com  
 Phone: +33 0 6 114 81 114  
 Mail: 563, Rue De La Prairie 73350  
 Bozell, France



**Belgium/ Netherlands / Luxembourg**  
**Distributor: Custom Diving Systems**  
 Contact Person: Yannig Charles  
 E-mail: contact@cds-pro.com  
 Phone: +33 0 6 114 81 114  
 Mail: 563, Rue De La Prairie 73350  
 Bozell, France



**Brazil Distributor:** **Seasub**  
 Contact Person: Pablo Y. Varela  
 E-mail: pablo@seasub.com.br  
 Phone: 55-11-38328342  
 Mail: Rua Baumann, 1039/1051,  
 Cep 05318000,  
 Sao Paulo, Brazil



**Canada Distributor:**  
**Pacific Scuba Industries**  
 Contact Person: Michael Joseph &  
 Laura Valente  
 E-mail: laurabigblue@outlook.com  
 Phone: 779-245-1962  
 Mail: 31519 Southern Dr, Abbotsford,  
 BC V2T5P1, Canada



**Czech Republic Distributor:** **Olson S.R.O.**  
 Contact Person: Sales Office  
 E-mail: olson@olson.cz  
 Phone: 420 220 805 300  
 Mail: Bubenek Nabrezi 306/16,  
 Holešovičky Tržnice – Hala 16  
 170 00, Prague 7  
 Czech Republic



**France / Europe Distributor:**  
**Custom Diving Systems**  
 Contact Person: Yannig Charles  
 E-mail: contact@cds-pro.com  
 Phone: +33 (0) 6 114 81 114  
 Mail: 563, Rue De La Prairie 73350  
 Bozell, France



**Germany Distributor:**  
**Custom Diving Systems**  
 Contact Person: Yannig Charles  
 E-mail: contact@cds-pro.com  
 Phone: +33 (0) 6 114 81 114  
 Mail: 563, Rue De La Prairie 73350  
 Bozell, France



**Greece / Croatia Distributor:**  
**Custom Diving Systems**  
 Contact Person: Yannig Charles  
 E-mail: contact@cds-pro.com  
 Phone: +33 (0) 6 114 81 114  
 Mail: 563, Rue De La Prairie 73350  
 Bozell, France



**Indonesia Distributor:** **Divesea Indonesia**  
 Contact Person: Chitra Hapsoro  
 E-mail: bigblue.id@gmail.com  
 Phone: 62-82145490450  
 Mail: Metro Park Residence, Unit MA-L6-05,  
 J.L. Pilar Mas Utama Raya Kav 28,  
 Kebon Jeruk, Jakarta Barat 11520 Indonesia



**Italy/ Malta Distributor:**  
**Custom Diving Systems**  
 Contact Person: Yannig Charles  
 E-mail: contact@cds-pro.com  
 Phone: +33 (0) 6 114 81 114  
 Mail: 563, Rue De La Prairie 73350  
 Bozell, France



**Japan Distributor:** **Zero Co., Ltd.**  
 Contact Person: Katsuhiko Saitome  
 E-mail: zero@zero-zero.co.jp  
 Phone: 81-3-5721-1906  
 Fax: 81-3-5721-1910  
 Mail: 1-11-5 Takaban, Meguro-Ku,  
 Tokyo, Japan



**Korea Distributor:** **King Sports**  
 Contact Person: Mr. Chang / Yun Hee Chang  
 E-mail: kingdive@kingports.co.kr  
 Phone: 82-2-3628251  
 Mail: 35-4, 1GA, Manri-Dong, Chung-Gu,  
 Seoul, Korea



**Kuwait Dealer:** **Ilmunz Marine Co.**  
 Contact Person: Abdulrahman Al-Serheed  
 E-mail: ilmunz@ilmunz.com  
 Phone: +965 95500999  
 Mail: Creative Design Center, Block 1, Street 10,  
 Building 63, Store 2.2,  
 Shuwaikh Industrial 1, Kuwait



**Malaysia Distributor:**  
**Rainbow Runner Sdn Bhd**  
 Contact Person: Sim  
 E-mail: ops@rainbowrunner.net  
 Phone: 60-341-622837  
 Fax: 60-341-617837  
 Mail: 5, Ukay Boulevard, Jalan Lingkar  
 Tengah 2, Hulu Kelang, 68000 Ampang,  
 Selangor, Malaysia



**Maldives Dealer:** **Sea Gear**  
 Contact Person: Hussien Abdulla  
 E-mail: sales@seagear.com.mv  
 Phone: +960 3302737  
 Mail: M. Araliya – Ground Floor – Alhithala Magu,  
 20292 Male, Maldives



**Mexico Distributor:**  
**Comercializadora UNIF Sa De CV**  
 Contact Person: Tristan Temat  
 E-mail: tristan@unifmexico.com.mx  
 Phone: +52 984 80 311 68  
 Mail: Calle 4 mte Mza 42 Lote 4-1 Local B Entre  
 25 y 30 Avenida Col. Centro Localidad:  
 Playa del Carmen, Q. Roo Municipio:  
 Solidaridad CP: 77710 Mexico



**New Zealand Distributor:** **Sea Tech Ltd.**  
 Contact Person: Dave Moran  
 E-mail: info@seatech.co.nz  
 Phone: 64-9-5210694  
 Mail: 47 Taubari St. Orakei, Auckland 1071,  
 New Zealand



**Philippines Distributor:**  
**Dive Supply Subic, Inc.**  
 Contact Person: Rowena Merto  
 E-mail: mural@aquaventurewhitetip.com  
 Phone: 63-2-708-9906  
 Mail: Office 687 EMS Building, 14th Street  
 Subic Gate Perimeter Road, Subic Bay  
 Freeport Zone, Olongapo City,  
 2222, Philippines



**Poland Distributor:** **Waterfall**  
 Contact Person: Darek  
 E-mail: darek@waterfall.pl  
 Phone: 48-800-340-002  
 Mail: UL. Klimczaka 22D/3, 02-797 Warszawa  
 Poland PL 7621470585



**Scandinavian Distributor:** **AquaFun AB**  
 Contact Person: Sales Office  
 E-mail: info@aquafun.se  
 Phone: 46-040-295-300  
 Mail: Sanktsgatan 4E, 215 79, Malmö,  
 Sweden



**Singapore Distributor:**  
**Divesea Pte Ltd**  
 Contact Person: Fairuz Ahmad  
 E-mail: team@divesea.com.sg  
 Phone: 65-85115164  
 Mail: 90 Lor 23 Geylang  
 Agrow Building # 01-03  
 Singapore 388393



**South Africa Distributor:**  
**Manex & Power Marine**  
 Contact Person: Gavin Jones  
 E-mail: gavin.jones@manex.co.za  
 Phone: 27-021-511-7292  
 Mail: 9 Paarden Eiland Road, Paarden Eiland,  
 South Africa



**Spain/ Portugal Distributor:**  
**Custom Diving Systems**  
 Contact Person: Yannig Charles  
 E-mail: contact@cds-pro.com  
 Phone: +33 (0) 6 114 81 114  
 Mail: 563, Rue De La Prairie 73350  
 Bozell, France



**Switzerland Distributor:**  
**Custom Diving Systems**  
 Contact Person: Yannig Charles  
 E-mail: contact@cds-pro.com  
 Phone: +33 0 6 114 81 114  
 Mail: 563, Rue De La Prairie 73350  
 Bozell, France



**Russia Distributor:** **Custom Diving Systems**  
 Contact Person: Yannig Charles  
 E-mail: contact@cds-pro.com  
 Phone: +33 (0) 6 114 81 114  
 Mail: 563, Rue De La Prairie 73350  
 Bozell, France



**Taiwan Distributor:** **Indigo Blue Technology Co. Ltd.**  
 Contact Person: Rachel Cheng  
 E-mail: rachel.cheng@weisat.com.tw  
 Phone: 886 2 82271619  
 Mail: 4F-6, No. 258 Lian Cheng Road,  
 Chung Ho Dist., New Taipei City 23553  
 Taiwan, ROC



**Turkey Distributor:** **K Pro Doga Sporlari**  
**Malzemeleri Tic. Ltd. STI**  
 Contact Person: Akin Kafkanoglu  
 E-mail: akinkafkanoglu@yahoo.com  
 Phone: 90-3124334479  
 Mail: Bulbulderei Cad. No: 23/A, Seyrantepe,  
 Ankara, Turkey



**U.A.E. Distributor:** **Senyar Marine Equipment**  
 Contact Person: Abdulla Al Kindi  
 E-mail: senyar7@gmail.com  
 Phone: 971-2-666-9999  
 Mail: P.O. Box 112790, Abu Dhabi, U.A.E.



**United Kingdom / Ireland Distributor:**  
**Liquid Sports Ltd.**  
 Contact Person: Alastair Ansell  
 E-mail: alastair@liquidsports.co.uk  
 Phone: 44-0-7585-935522  
 Mail: 11 Stag Lane, Berkhamsted,  
 Hertfordshire, HP4 1FJ, UK





# bigblue

THE BRIGHTER IDEA

Headquarters :  
Bossk International Company Limited  
Contact Person : Oscar Tong  
E-mail : [oscar@bigblue.com.hk](mailto:oscar@bigblue.com.hk)  
Phone : 852-3568-0773  
Fax: 852-3998-3127  
Mail : Room 818, 8/F, Po Yip Building, 23, Hing Yip  
Street, Kwun Tong, Hong Kong  
Website : [www.bigbluelights.com](http://www.bigbluelights.com)  
[www.bigblue.com.hk](http://www.bigblue.com.hk)

US Sales Office : BosskUSA / Bigblue Dive Lights  
Contact Person : Tim Ratcliffe  
E-mail : [sales@bigbluedive.com](mailto:sales@bigbluedive.com)  
Phone : 727-442-2300  
Fax: 727-499-7117  
Mail : 1710N Hercules Ave, Suite 103, Clearwater,  
FL 33765 USA

Visit Us  
on website



Like Us  
on facebook

